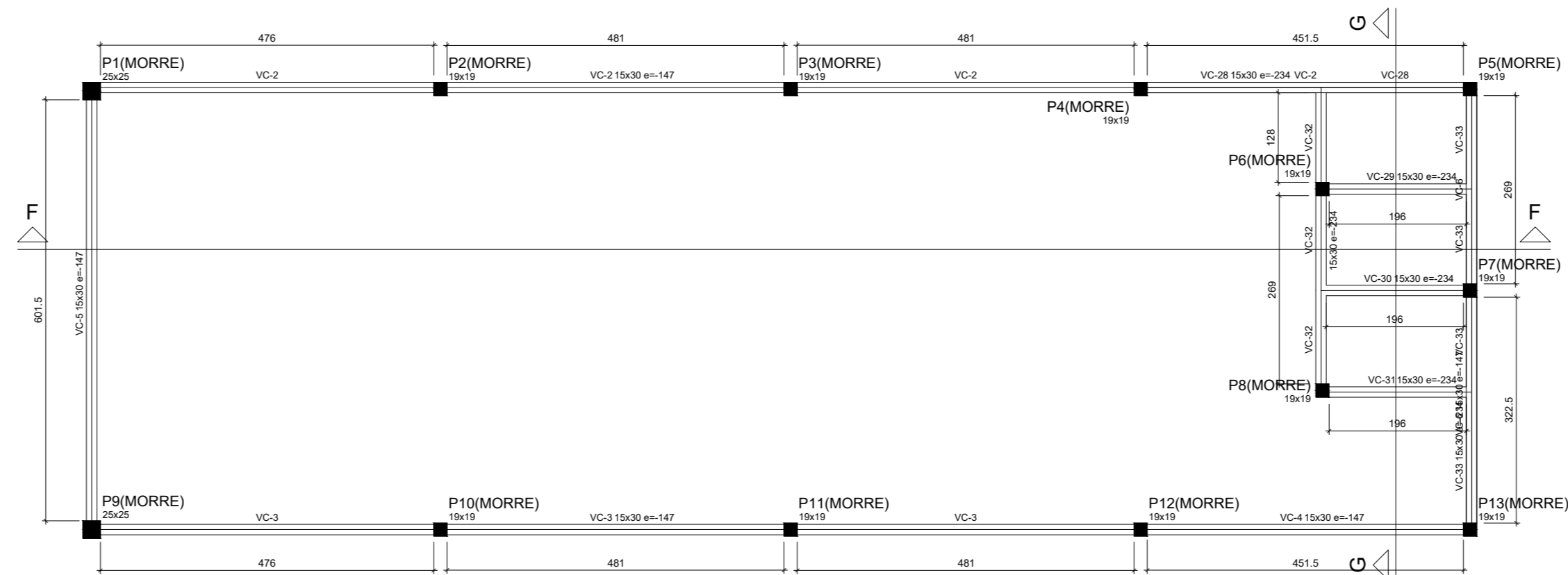


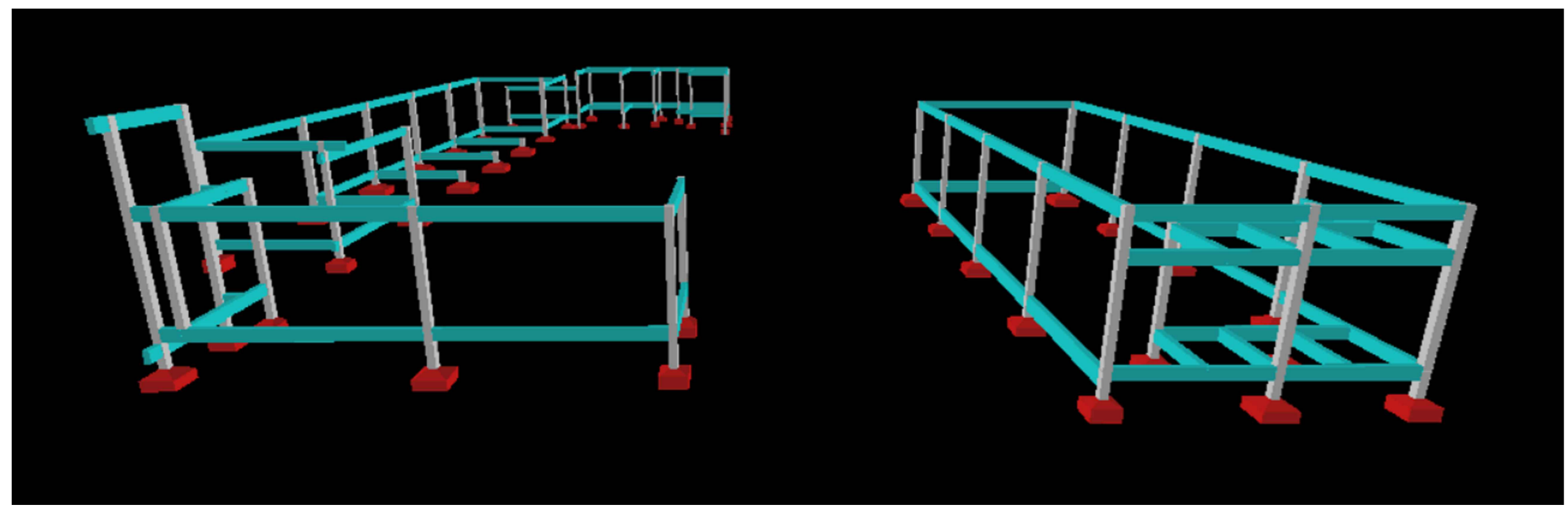
Relação do aço						
ELEMENTO	AÇO	N	DIAM	Q	UNIT (cm)	C.TOTAL (cm)
VB-24	CA60	1	5.0	22	98	2156
	CA50	2	10.0	5	435	2175
	CA50	3	10.0	1	137	137
VB-25	CA50	4	10.0	2	429	858
	CA50	5	5.0	20	98	1960
	CA50	6	8.0	1	125	125
VB-26	CA50	7	8.0	3	440	1320
	CA50	8	8.0	3	446	1338
	CA50	9	10.0	3	430	1290
VB-27	CA50	10	5.0	20	98	1960
	CA50	11	10.0	3	430	1290
	CA50	12	10.0	1	132	132
VB-28	CA50	13	10.0	2	446	892
	CA50	14	10.0	2	453	906
	CA50	15	5.0	20	98	1960
VB-29	CA50	16	10.0	3	430	1290
	CA50	17	10.0	1	132	132
	CA50	18	10.0	2	446	892
VB-30	CA50	19	10.0	2	453	906
	CA50	20	5.0	2	272	544
	CA50	21	5.0	31	108	3348
VB-31	CA50	22	8.0	4	382	1528
	CA50	23	8.0	2	655	1310
	CA50	24	8.0	3	662	1986
VB-32	CA50	25	8.0	2	159	318
	CA50	26	8.0	3	163	489
	CA50	27	8.0	3	208	624
VB-33	CA50	28	8.0	3	139	417
	CA50	29	8.0	1	143	143
	CA50	30	8.0	2	199	398
VB-34	CA50	31	8.0	3	203	609
	CA60	32	5.0	20	98	1960
	CA50	33	10.0	5	424	2120
VB-35	CA50	34	10.0	2	418	836
	CA60	35	5.0	25	78	1950
	CA50	36	8.0	2	400	800
VB-36	CA50	37	8.0	2	416	832
	CA60	38	5.0	3	78	234
	CA50	39	8.0	2	74	148
VB-37	CA50	40	8.0	2	92	184
	CA60	41	5.0	28	78	2184
	CA50	42	8.0	2	452	904
VB-38	CA50	43	8.0	1	125	125
	CA50	44	8.0	2	474	948
	CA60	45	5.0	4	78	312
VB-39	CA50	46	8.0	2	82	164
	CA50	47	10.0	2	120	240
	CA60	48	5.0	2	227	454
VB-40	CA60	49	5.0	68	78	5304
	CA50	50	8.0	1	257	257
	CA50	51	8.0	2	1052	2104
VB-41	CA50	52	8.0	2	135	270
	CA50	53	8.0	4	200	800
	CA50	54	8.0	1	126	126
VB-42	CA50	55	8.0	1	181	181
	CA50	56	8.0	2	755	1510
	CA50	57	5.0	40	78	3120
VB-43	CA50	58	8.0	2	643	1286
	CA50	59	8.0	2	659	1318
	CA60	60	5.0	27	98	2646
VB-44	CA50	61	8.0	2	594	1188
	CA50	62	8.0	2	658	1316

Resumo do aço			
AÇO	DIAM	C.TOTAL (m)	PESO (kg)
CA50	8.0	250.7	99
CA50	10.0	141	87
CA60	5.0	301	46.3
PESO TOTAL			
CA50			186
CA60			46.3

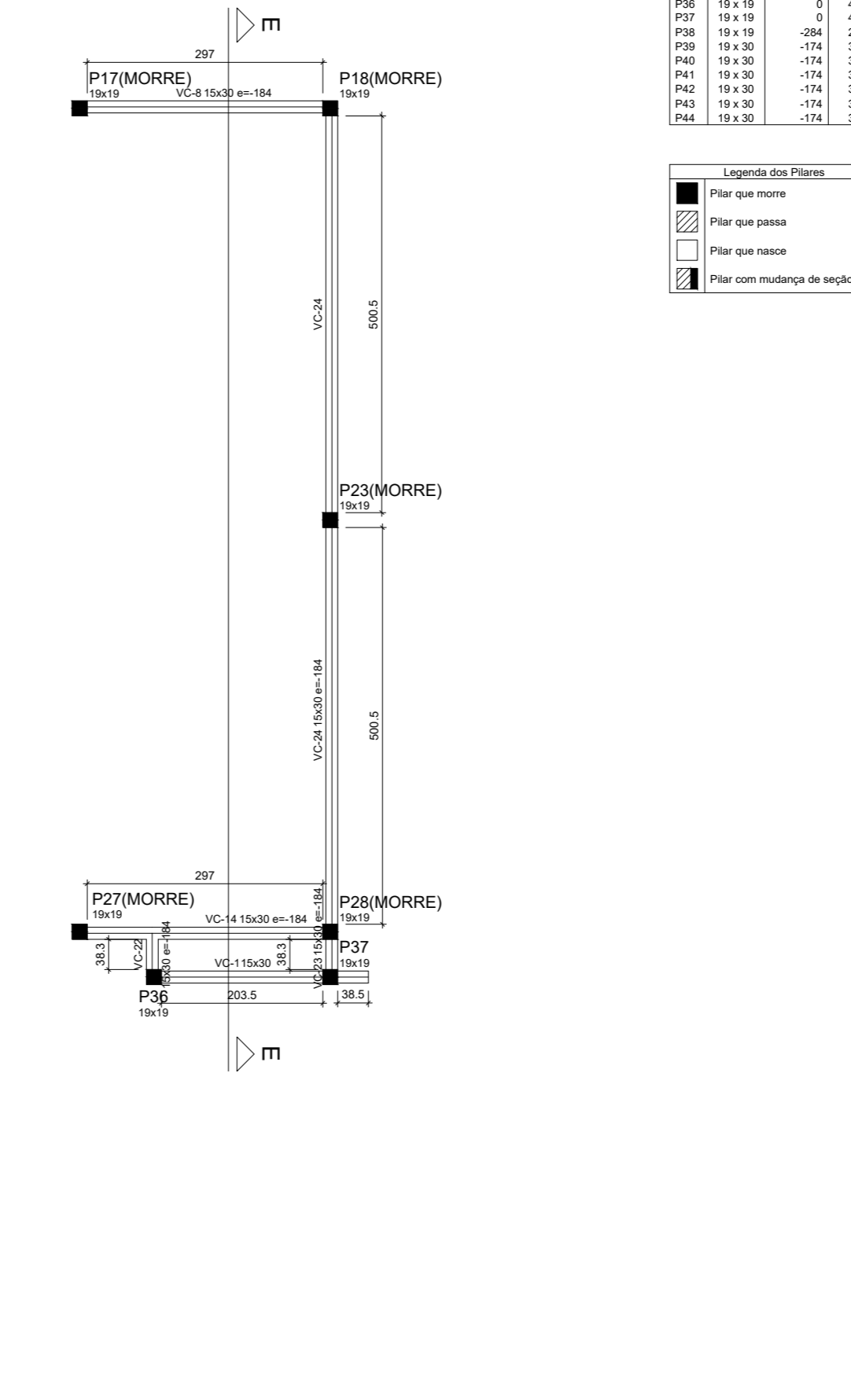
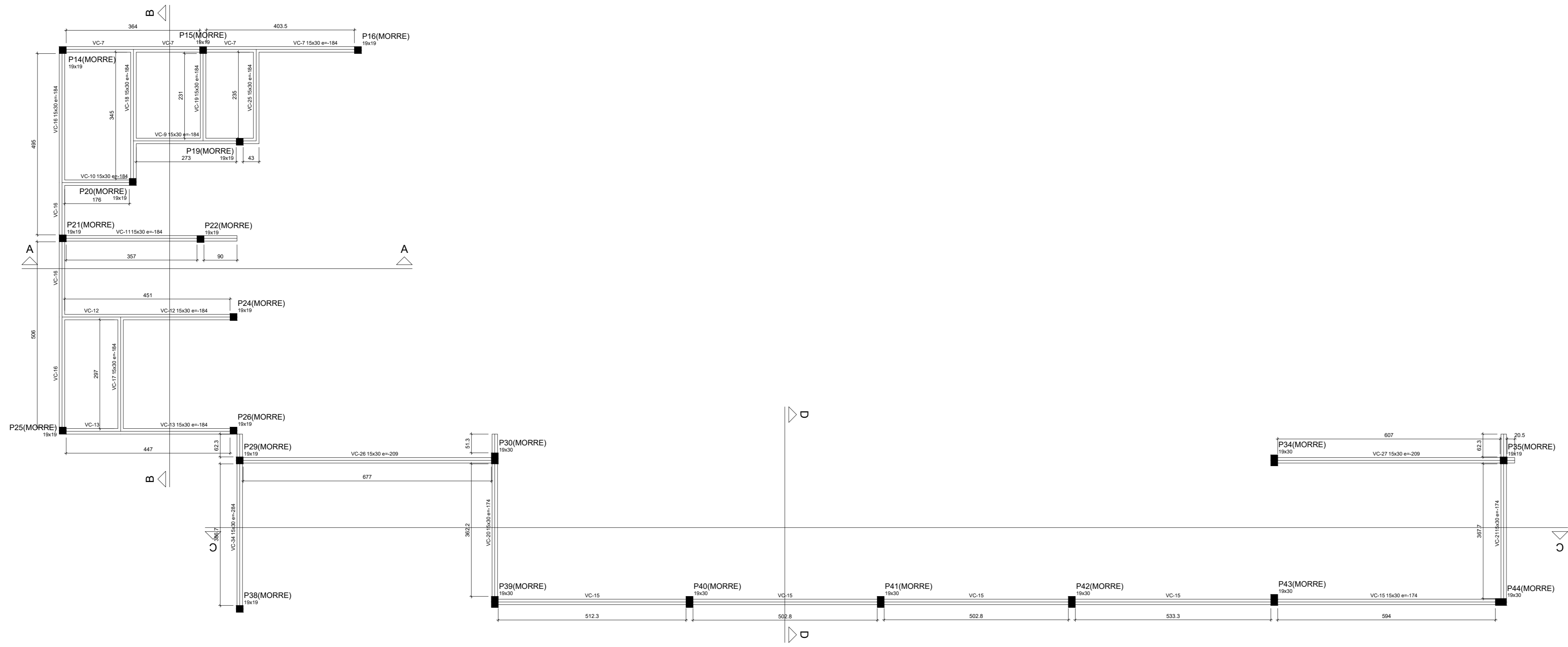
Vol. de concreto total (C-25) = 3.27 m³
 Área de forma total = 52.63 m²





VC	Diâmetro	Comprimento	Quantidade	Peso
VC-1	10.0	1.00	1	0.01
VC-2	10.0	1.00	1	0.01
VC-3	10.0	1.00	1	0.01
VC-4	10.0	1.00	1	0.01
VC-5	10.0	1.00	1	0.01
VC-6	10.0	1.00	1	0.01
VC-7	10.0	1.00	1	0.01
VC-8	10.0	1.00	1	0.01
VC-9	10.0	1.00	1	0.01
VC-10	10.0	1.00	1	0.01
VC-11	10.0	1.00	1	0.01
VC-12	10.0	1.00	1	0.01
VC-13	10.0	1.00	1	0.01
VC-14	10.0	1.00	1	0.01
VC-15	10.0	1.00	1	0.01
VC-16	10.0	1.00	1	0.01
VC-17	10.0	1.00	1	0.01
VC-18	10.0	1.00	1	0.01
VC-19	10.0	1.00	1	0.01
VC-20	10.0	1.00	1	0.01
VC-21	10.0	1.00	1	0.01
VC-22	10.0	1.00	1	0.01
VC-23	10.0	1.00	1	0.01
VC-24	10.0	1.00	1	0.01
VC-25	10.0	1.00	1	0.01
VC-26	10.0	1.00	1	0.01
VC-27	10.0	1.00	1	0.01
VC-28	10.0	1.00	1	0.01
VC-29	10.0	1.00	1	0.01
VC-30	10.0	1.00	1	0.01
VC-31	10.0	1.00	1	0.01
VC-32	10.0	1.00	1	0.01
VC-33	10.0	1.00	1	0.01
VC-34	10.0	1.00	1	0.01
VC-35	10.0	1.00	1	0.01
VC-36	10.0	1.00	1	0.01
VC-37	10.0	1.00	1	0.01
VC-38	10.0	1.00	1	0.01
VC-39	10.0	1.00	1	0.01
VC-40	10.0	1.00	1	0.01
VC-41	10.0	1.00	1	0.01
VC-42	10.0	1.00	1	0.01
VC-43	10.0	1.00	1	0.01
VC-44	10.0	1.00	1	0.01
VC-45	10.0	1.00	1	0.01
VC-46	10.0	1.00	1	0.01
VC-47	10.0	1.00	1	0.01
VC-48	10.0	1.00	1	0.01
VC-49	10.0	1.00	1	0.01
VC-50	10.0	1.00	1	0.01
VC-51	10.0	1.00	1	0.01
VC-52	10.0	1.00	1	0.01
VC-53	10.0	1.00	1	0.01
VC-54	10.0	1.00	1	0.01
VC-55	10.0	1.00	1	0.01
VC-56	10.0	1.00	1	0.01
VC-57	10.0	1.00	1	0.01
VC-58	10.0	1.00	1	0.01
VC-59	10.0	1.00	1	0.01
VC-60	10.0	1.00	1	0.01
VC-61	10.0	1.00	1	0.01
VC-62	10.0	1.00	1	0.01
VC-63	10.0	1.00	1	0.01
VC-64	10.0	1.00	1	0.01
VC-65	10.0	1.00	1	0.01
VC-66	10.0	1.00	1	0.01
VC-67	10.0	1.00	1	0.01
VC-68	10.0	1.00	1	0.01
VC-69	10.0	1.00	1	0.01
VC-70	10.0	1.00	1	0.01
VC-71	10.0	1.00	1	0.01
VC-72	10.0	1.00	1	0.01
VC-73	10.0	1.00	1	0.01
VC-74	10.0	1.00	1	0.01
VC-75	10.0	1.00	1	0.01
VC-76	10.0	1.00	1	0.01
VC-77	10.0	1.00	1	0.01
VC-78	10.0	1.00	1	0.01
VC-79	10.0	1.00	1	0.01
VC-80	10.0	1.00	1	0.01
VC-81	10.0	1.00	1	0.01
VC-82	10.0	1.00	1	0.01
VC-83	10.0	1.00	1	0.01
VC-84	10.0	1.00	1	0.01
VC-85	10.0	1.00	1	0.01
VC-86	10.0	1.00	1	0.01
VC-87	10.0	1.00	1	0.01
VC-88	10.0	1.00	1	0.01
VC-89	10.0	1.00	1	0.01
VC-90	10.0	1.00	1	0.01
VC-91	10.0	1.00	1	0.01
VC-92	10.0	1.00	1	0.01
VC-93	10.0	1.00	1	0.01
VC-94	10.0	1.00	1	0.01
VC-95	10.0	1.00	1	0.01
VC-96	10.0	1.00	1	0.01
VC-97	10.0	1.00	1	0.01
VC-98	10.0	1.00	1	0.01
VC-99	10.0	1.00	1	0.01
VC-100	10.0	1.00	1	0.01



Perspectiva 03 sem escala



PROJETO ESTRUTURAL

PROJETO NÚMERO:

OBRA:

RT. PROJETO:	PROPRIETÁRIO:
DOMINGOS J. DA COSTA ENG. CIVIL CREA-TO nº 21188/8D	PREFEITURA MUNICIPAL DE ALIANÇA DO TOCANTINS-TO PREFEITO: ELVES MOREIRA GUIMARÃES

RT. EXECUÇÃO:

DECLARO QUE A APROVAÇÃO DESSE PROJETO NÃO IMPLICA NO RECONHECIMENTO POR PARTE DA PREFEITURA DO DIREITO DE PROPRIEDADE DO TERRENO

DESENHO: ENG. MURYLO RODRIGUES CÂNDIDO DE OLIVEIRA
CONTEÚDO: DETALHE DAS VIGAS BALDRAME, PLANTA DE FORMA DA COBERTURA E CORTE ESQUEMÁTICO

LOCALIZAÇÃO: RUA CENTO E SEIS S/N, QD. 09, LT. 01, JARDIM ALIANÇA	ESTADO: TO	DATA: JAN/2023	
ESCALA: INDICADA	REVISÃO:	ÁREAS: Ver Arq.	FRANCHA: 04/06