

Relação do aço

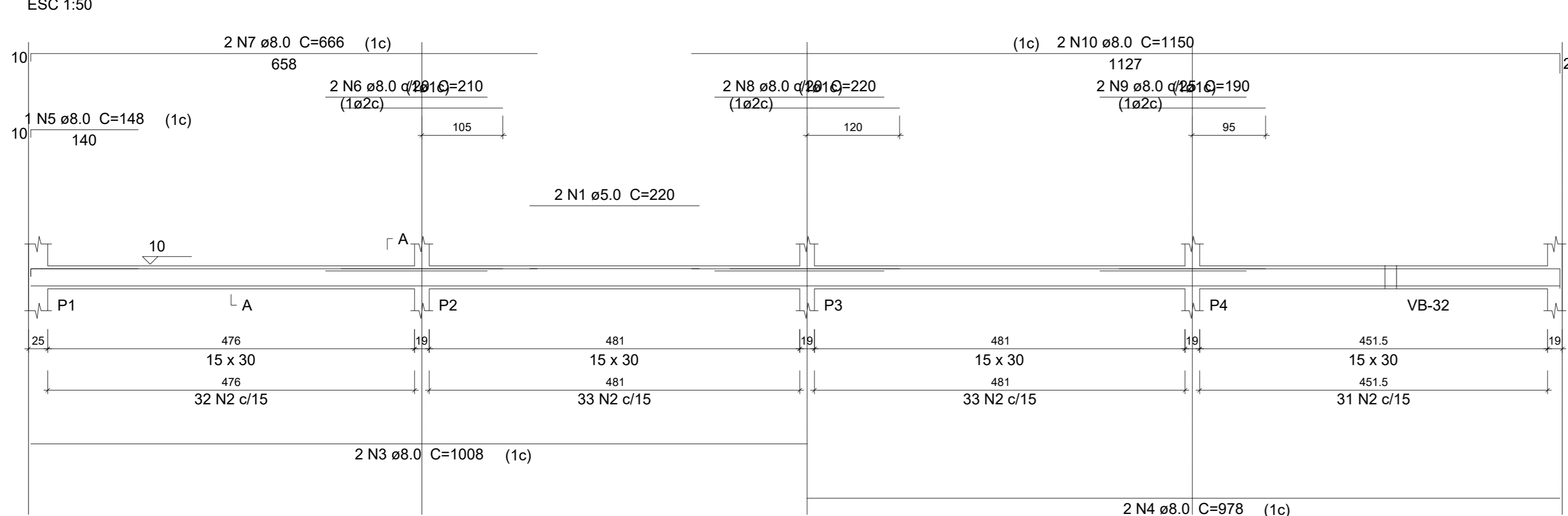
ELEMENTO	CAÇO	N	DIAM	Q	UNIT (cm)	C.TOTAL (cm)
VB-1	CA60	1	5.0	2	220	440
	CA60	2	5.0	129	78	10062
	CA60	3	8.0	2	1008	2016
	CA50	4	8.0	2	978	1956
	CA50	5	8.0	2	148	296
	CA50	6	8.0	2	210	420
	CA50	7	8.0	2	666	1332
	CA50	8	8.0	2	220	440
	CA50	9	8.0	2	190	380
	CA50	10	8.0	2	1150	2300
VB-2	CA60	11	5.0	14	78	1092
	CA50	12	8.0	2	224	448
VB-3	CA60	13	8.0	2	254	508
	CA60	14	5.0	14	78	1092
VB-4	CA60	15	8.0	2	224	448
	CA50	16	8.0	2	254	508
VB-5	CA60	17	5.0	14	78	1092
	CA50	18	8.0	2	232	464
VB-6	CA60	19	8.0	2	254	508
	CA60	20	5.0	2	253	506
VB-7	CA60	21	5.0	2	225	450
	CA60	22	5.0	2	230	460
VB-8	CA60	23	5.0	2	236	472
	CA60	24	5.0	91	98	8918
VB-9	CA60	25	8.0	2	1008	2016
	CA50	26	8.0	2	978	1956
VB-10	CA60	27	8.0	2	128	256
	CA50	28	8.0	1	190	380
VB-11	CA60	29	8.0	2	290	580
	CA50	30	8.0	1	195	390
VB-12	CA60	31	8.0	2	295	590
	CA50	32	8.0	2	137	274
VB-13	CA60	33	10.0	2	305	610
	CA60	34	5.0	52	78	4056
VB-14	CA60	35	8.0	1	153	306
	CA50	36	8.0	2	819	1638
VB-15	CA60	37	8.0	1	205	410
	CA50	38	8.0	1	478	956
VB-16	CA60	39	8.0	1	80	160
	CA50	40	8.0	2	835	1670
VB-17	CA60	41	5.0	20	78	1560
	CA50	42	8.0	2	329	658
VB-18	CA60	43	8.0	2	345	690
	CA60	44	5.0	12	78	936
VB-19	CA60	45	8.0	2	234	468
	CA50	46	8.0	2	234	468
VB-20	CA60	47	5.0	30	78	2340
	CA50	48	8.0	2	479	958
VB-21	CA60	49	8.0	1	154	308
	CA50	50	8.0	2	523	1046
VB-22	CA60	51	5.0	2	308	616
	CA60	52	5.0	33	78	2574
VB-23	CA60	53	8.0	3	268	804
	CA50	54	8.0	2	487	974
VB-24	CA60	55	10.0	1	156	312
	CA50	56	10.0	2	216	432
VB-25	CA60	57	5.0	30	78	2340
	CA50	58	8.0	1	221	442
VB-26	CA60	59	8.0	2	487	974
	CA50	60	8.0	1	134	268
VB-27	CA60	61	8.0	1	138	276
	CA50	62	8.0	1	133	266
VB-28	CA60	63	8.0	1	193	386
	CA50	64	8.0	2	531	1062
VB-29	CA60	65	8.0	2	78	156
	CA50	66	8.0	2	329	658
VB-30	CA60	67	8.0	2	355	710
	CA60	68	5.0	17	78	1326
VB-31	CA60	69	8.0	2	274	548
	CA60	70	8.0	2	304	608
VB-32	CA60	71	5.0	2	296	592
	CA60	72	5.0	46	78	3588
VB-33	CA60	73	8.0	1	119	238
	CA50	74	8.0	2	175	350
VB-34	CA60	75	8.0	1	179	358
	CA50	76	8.0	2	239	478
VB-35	CA60	77	10.0	2	709	1418
	CA50	78	10.0	2	177	354
VB-36	CA60	79	10.0	2	257	514
	CA60	80	5.0	2	266	532
VB-37	CA60	81	5.0	43	78	3354
	CA50	82	8.0	1	286	572
VB-38	CA60	83	8.0	2	660	1320
	CA50	84	10.0	1	152	304
VB-39	CA60	85	10.0	2	232	464
	CA50	86	10.0	1	156	312
VB-40	CA60	87	10.0	2	239	478
	CA60	88	5.0	2	226	452
VB-41	CA60	89	5.0	2	222	444
	CA60	90	5.0	103	78	8034
VB-42	CA60	91	8.0	2	1060	2120
	CA50	92	8.0	2	529	1058
VB-43	CA60	93	8.0	2	210	420
	CA50	94	8.0	2	205	410
VB-44	CA60	95	8.0	2	872	1744
	CA50	96	10.0	2	192	384
VB-45	CA60	97	10.0	2	188	376
	CA60	98	5.0	2	232	464
VB-46	CA60	99	5.0	36	78	2808
	CA50	100	8.0	2	565	1130
VB-47	CA60	101	8.0	1	151	302
	CA50	102	8.0	1	155	310
VB-48	CA60	103	8.0	2	205	410
	CA50	104	10.0	2	211	422
VB-49	CA60	105	5.0	49	98	4802
	CA50	106	8.0	1	235	470
VB-50	CA60	107	8.0	1	532	1064
	CA50	108	8.0	2	1052	2104
VB-51	CA60	109	10.0	2	245	490
	CA50	110	10.0	2	1104	2208
VB-52	CA60	111	5.0	2	267	534
	CA60	112	5.0	20	78	1560
VB-53	CA60	113	8.0	2	321	642
	CA50	114	8.0	2	83	166
VB-54	CA60	115	5.0	23	78	1794
	CA50	116	8.0	1	237	474
VB-55	CA60	117	8.0	2	373	746
	CA50	118	8.0	1	118	236
VB-56	CA60	119	8.0	2	417	834
	CA60	120	5.0	16	78	1248
VB-57	CA60	121	8.0	2	259	518
	CA50	122	8.0	2	289	578
VB-58	CA60	123	5.0	31	78	2418
	CA50	124	8.0	2	481	962
VB-59	CA60	125	8.0	2	511	1022
	CA60	126	5.0	7	78	546
VB-60	CA60	127	8.0	2	108	216
	CA50	128	8.0	2	138	276

Resumo do aço

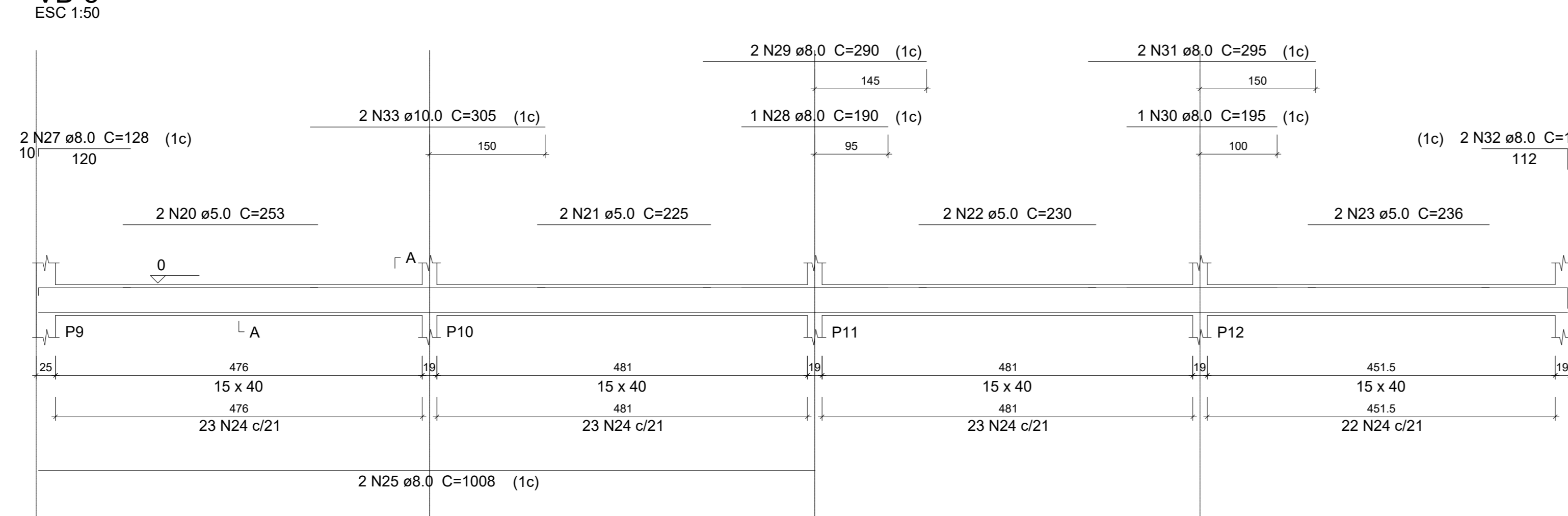
CAÇO	DIAM	C.TOTAL (m)	PESO (kg)
CA50	8.0	532.2	210.2
CA60	10.0	86.2	53.2
CA60	5.0	751.4	115.7
PESO TOTAL			
CA50		263.4	
CA60		115.7	

Vol. de concreto total (C-25) = 6.89 m³
Área de forma total = 113.24 m²

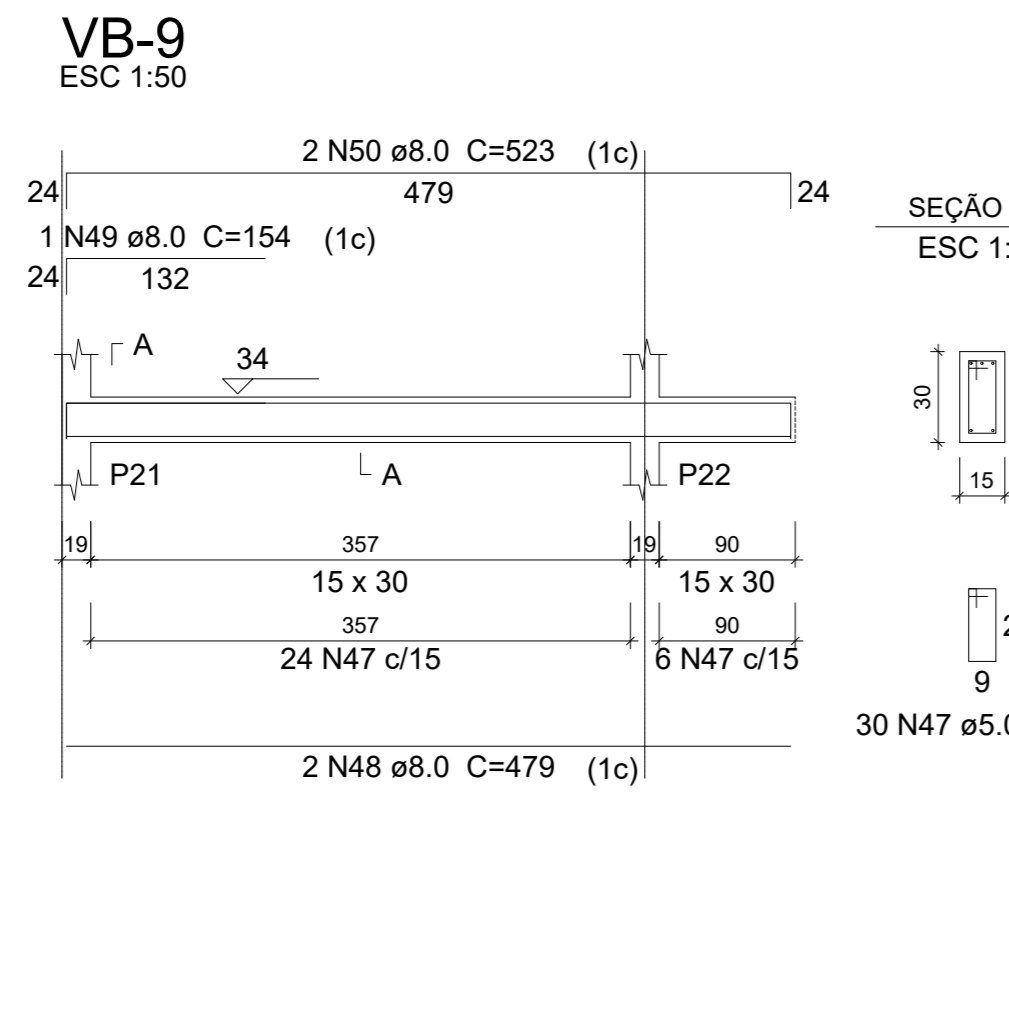
VB-1



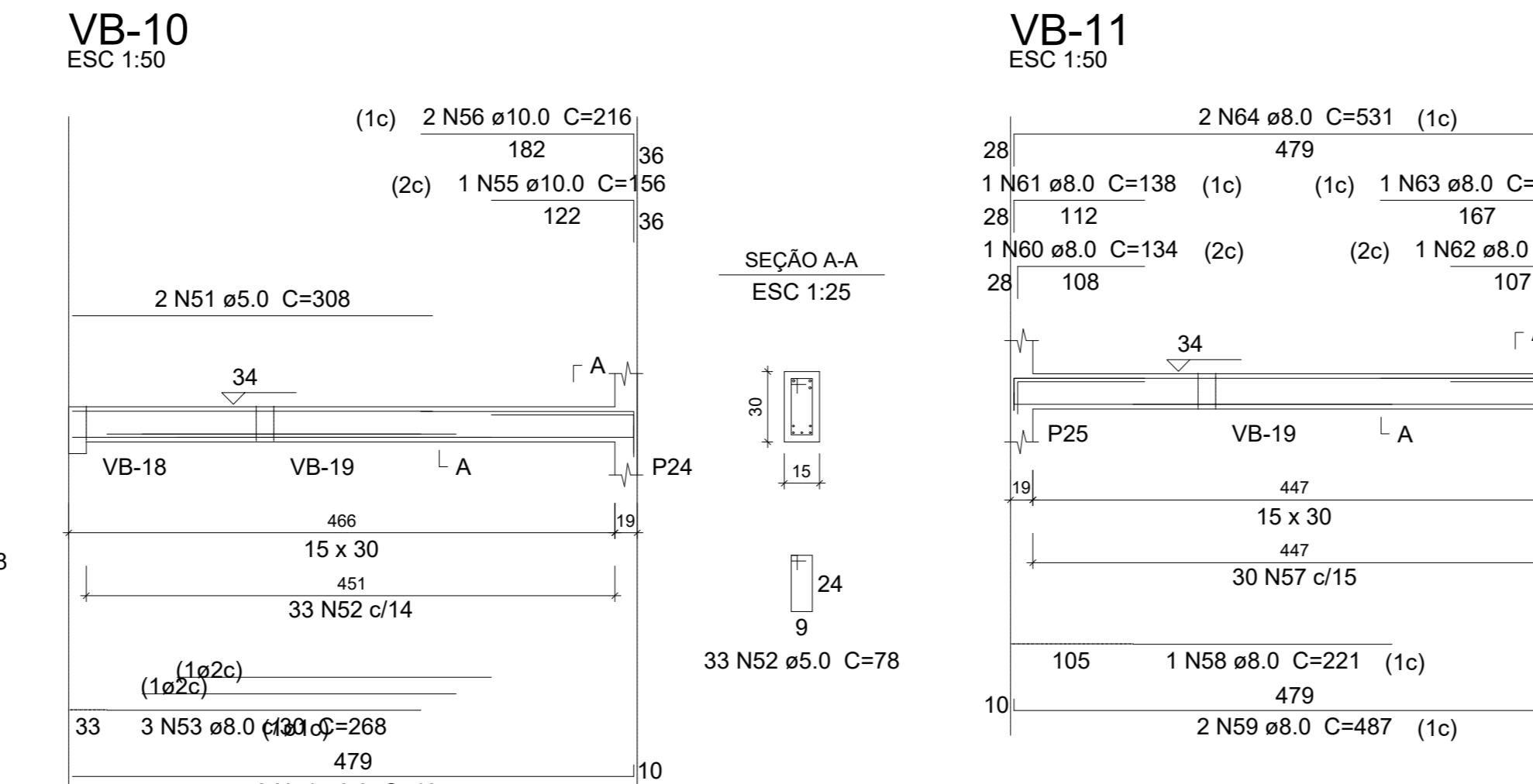
VB-5



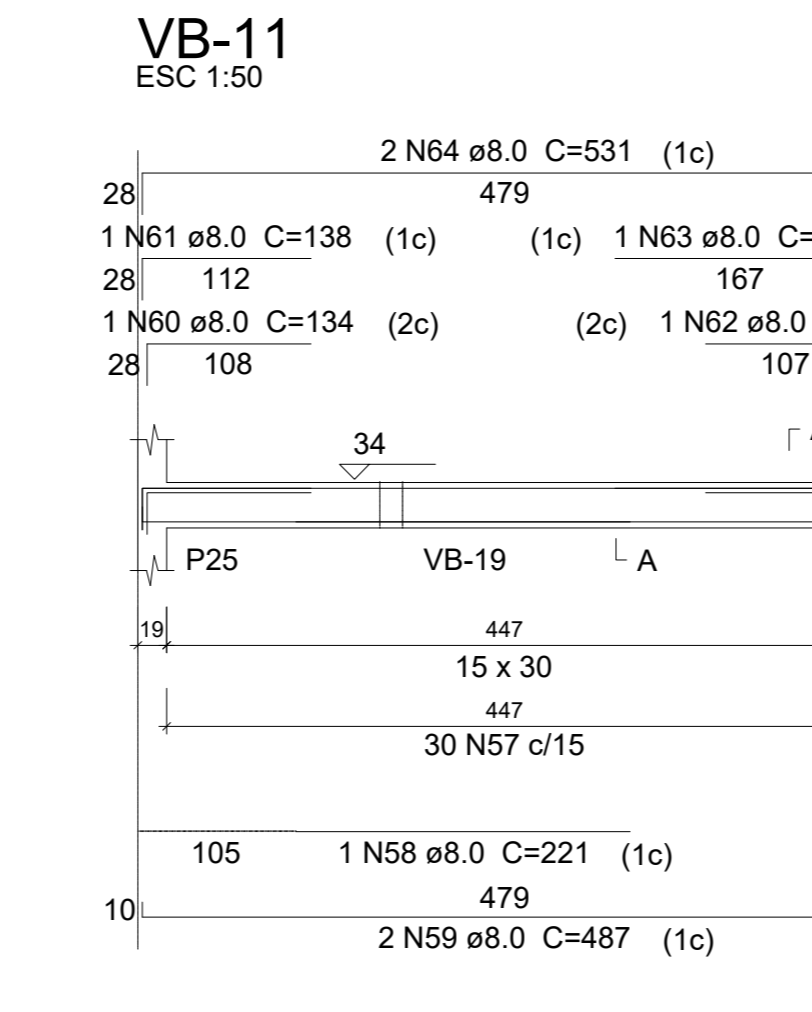
VB-9



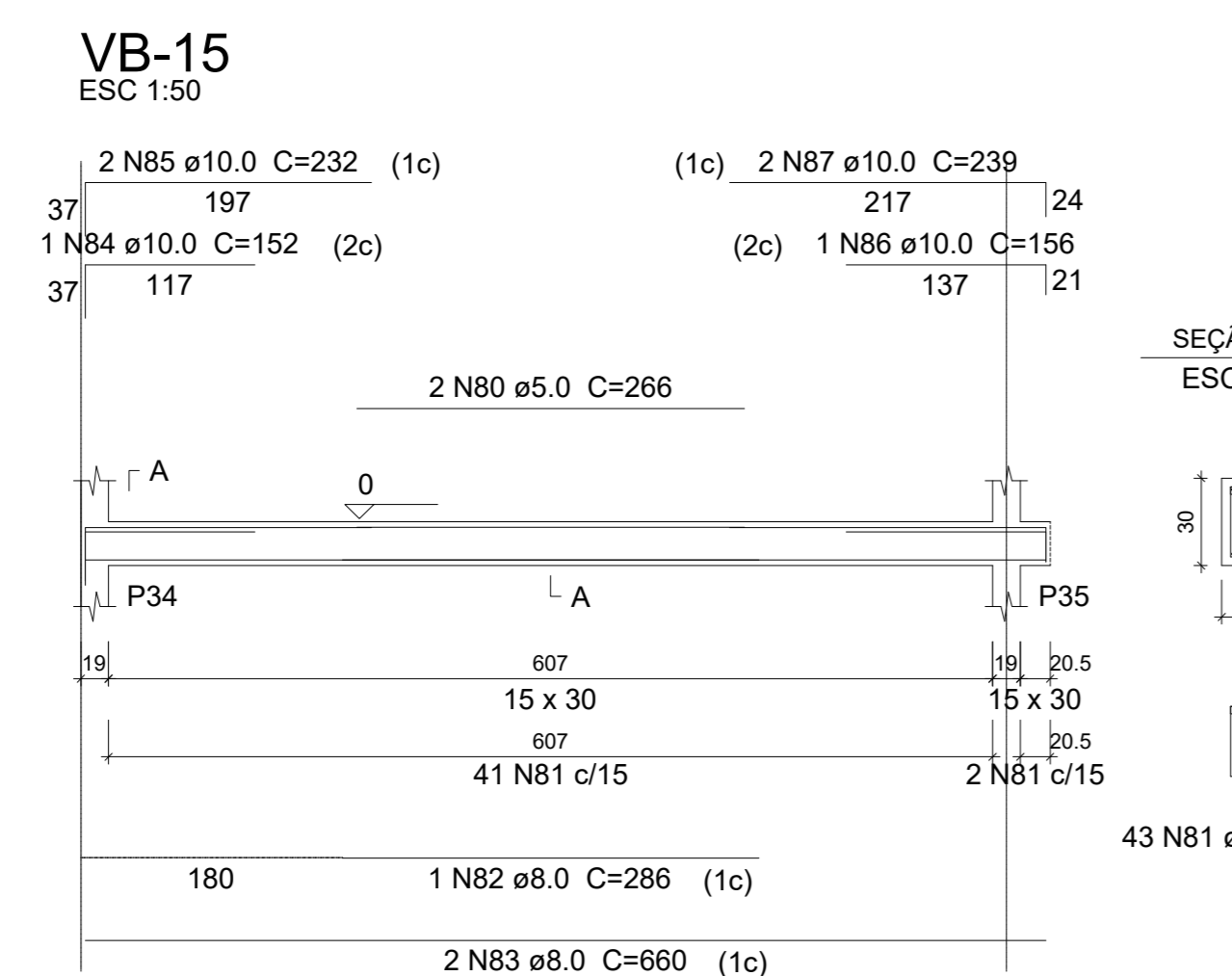
VB-10



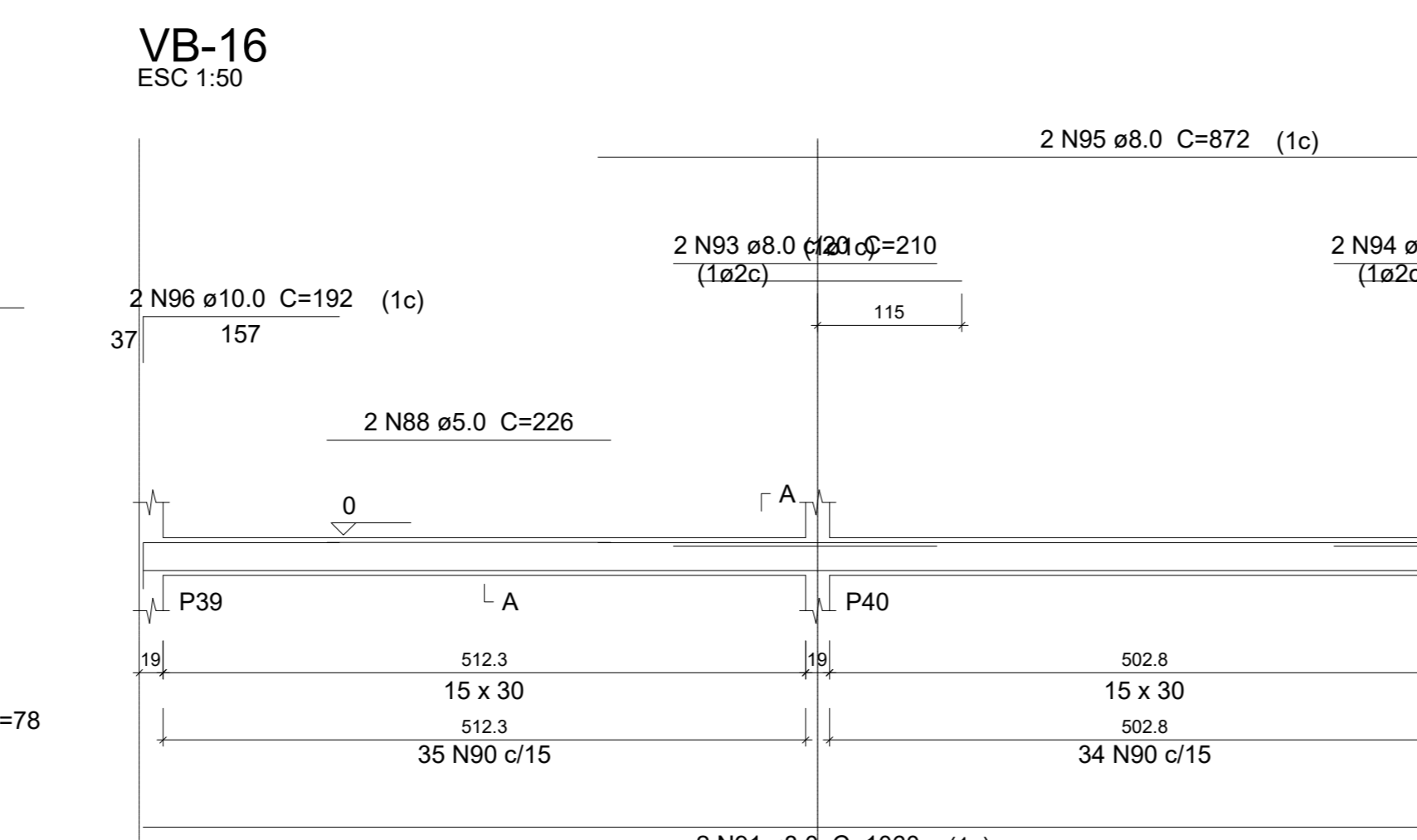
VB-11



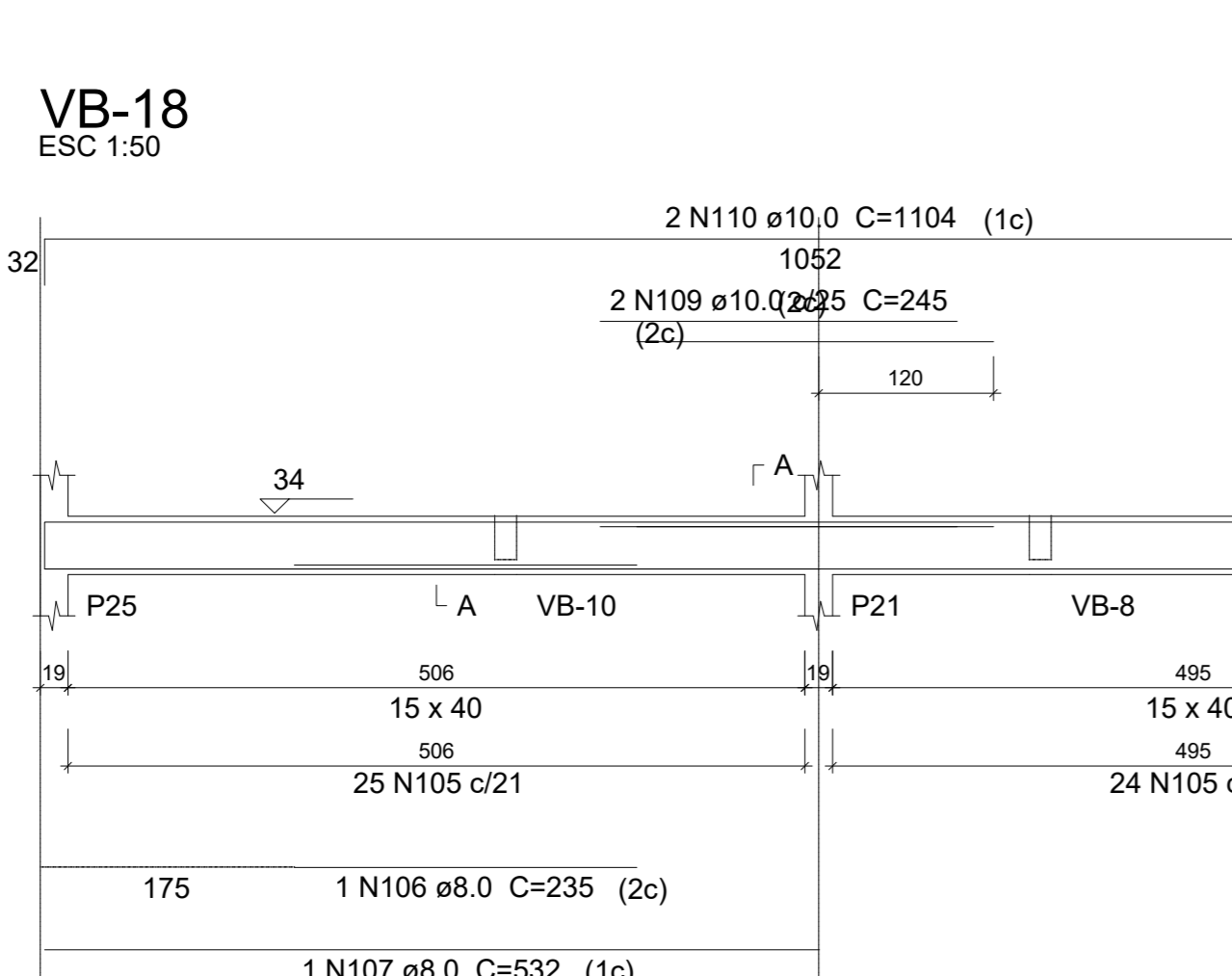
VB-15



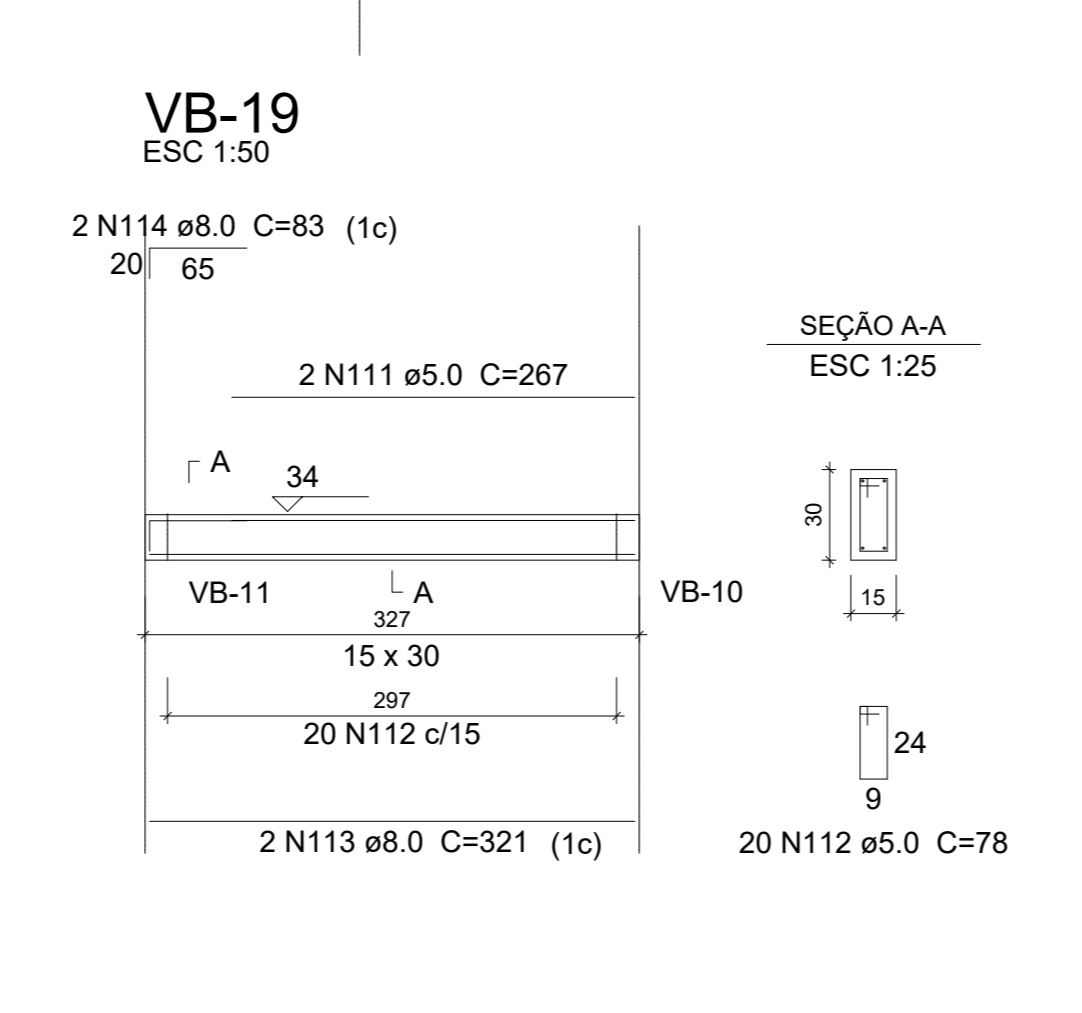
VB-16



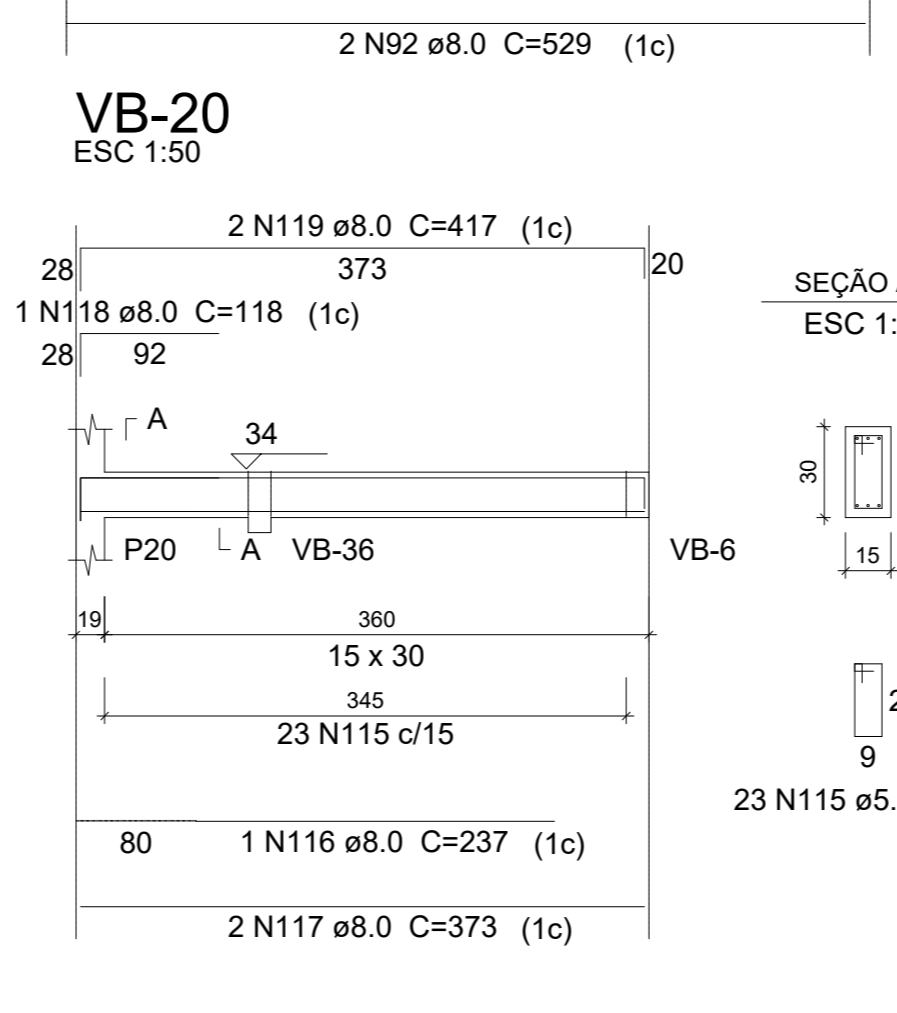
VB-18



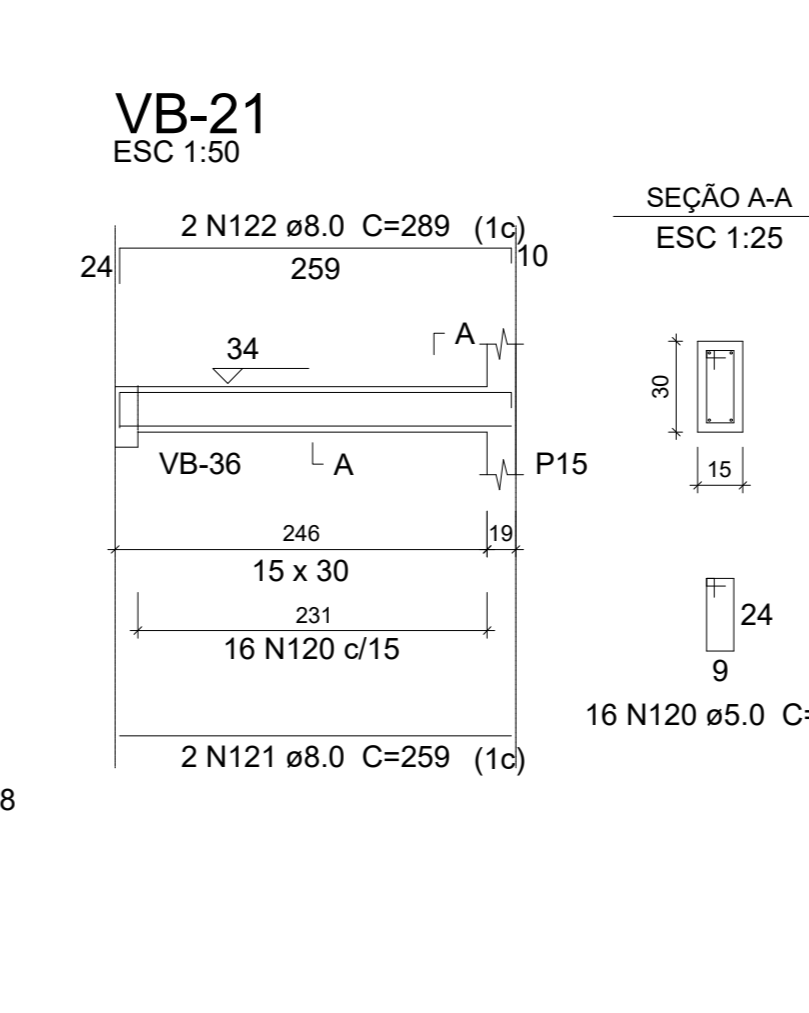
VB-19



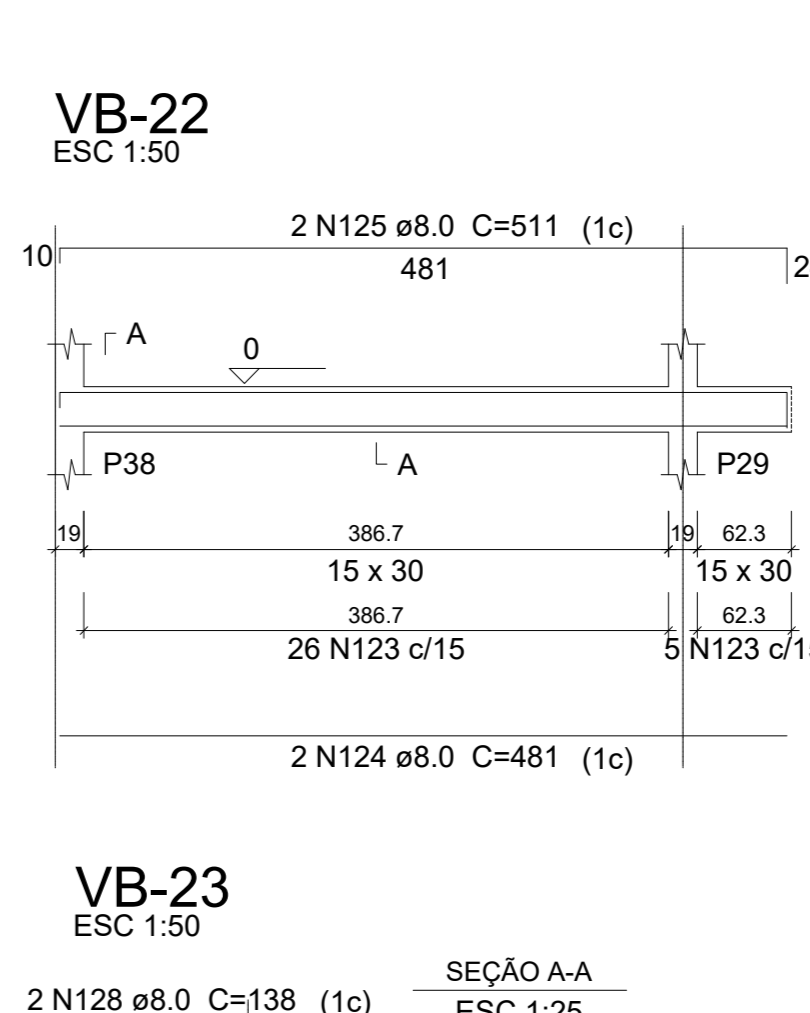
VB-20



VB-21



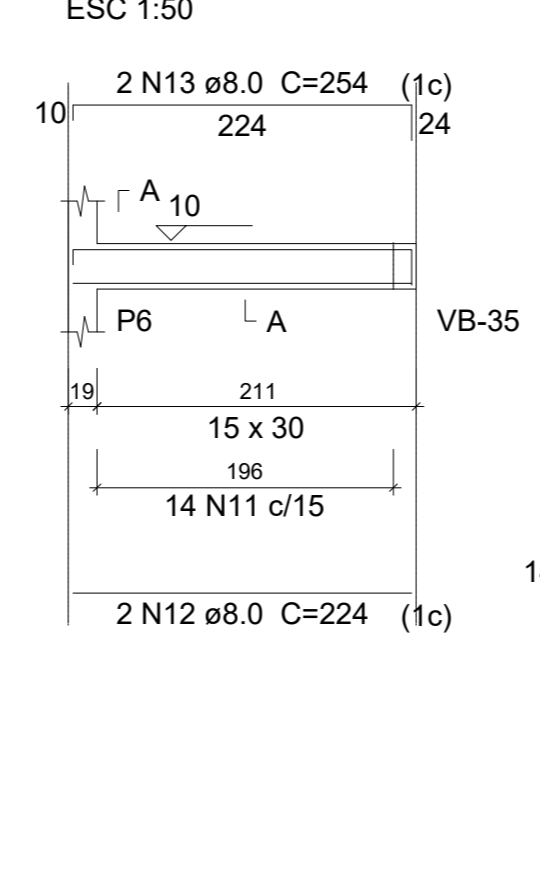
VB-22



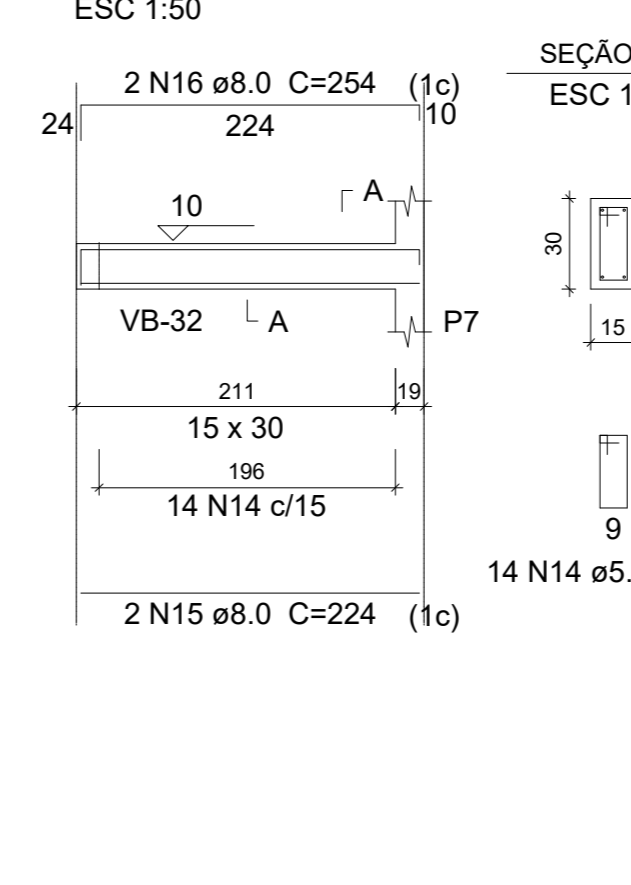
VB-23



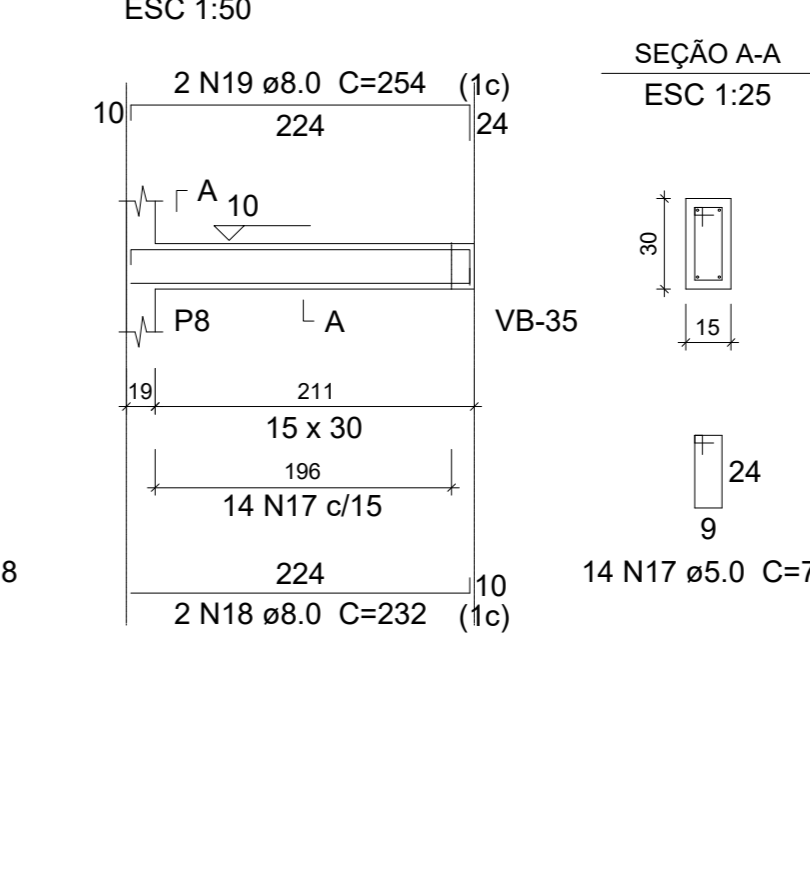
VB-2



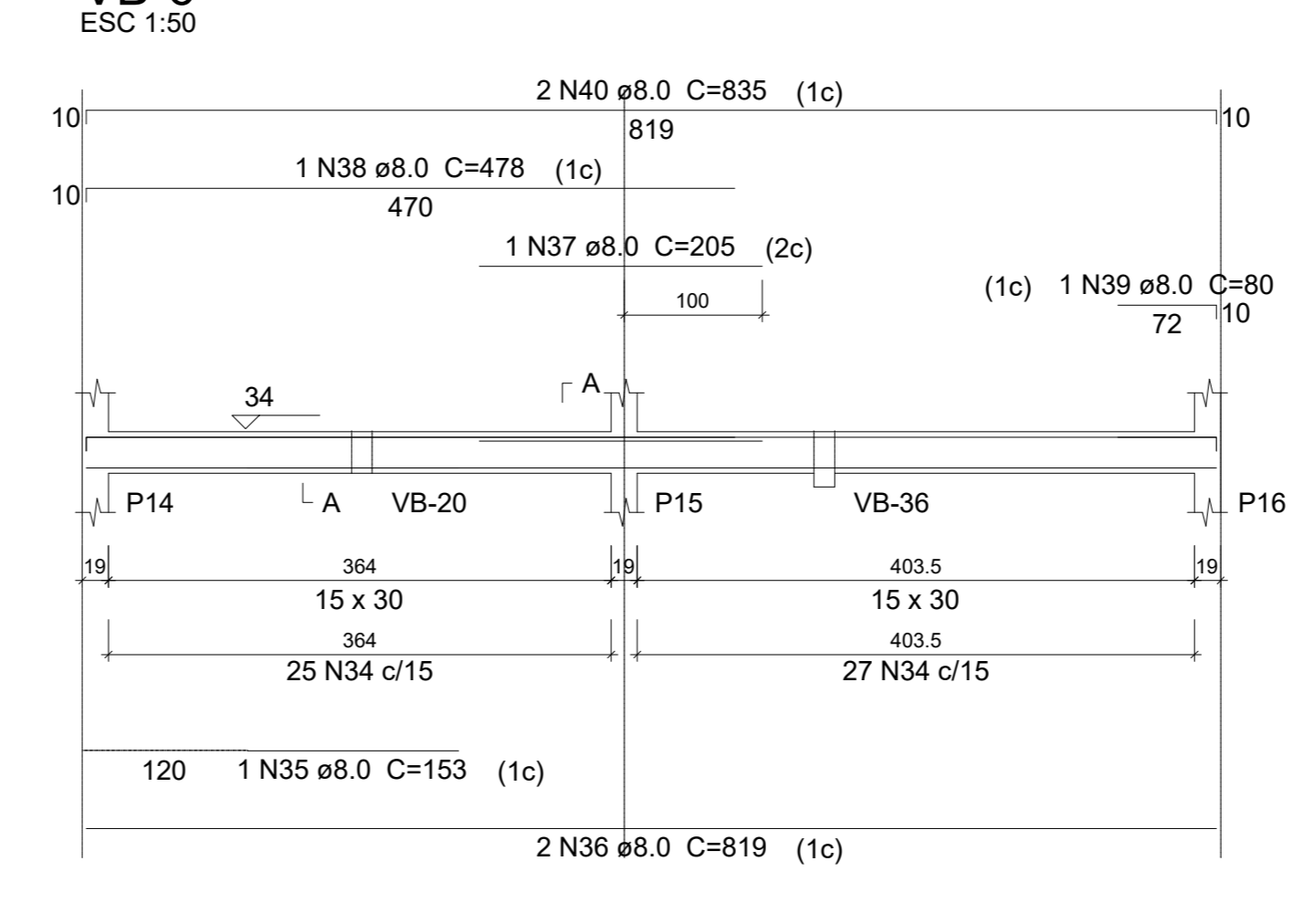
VB-3



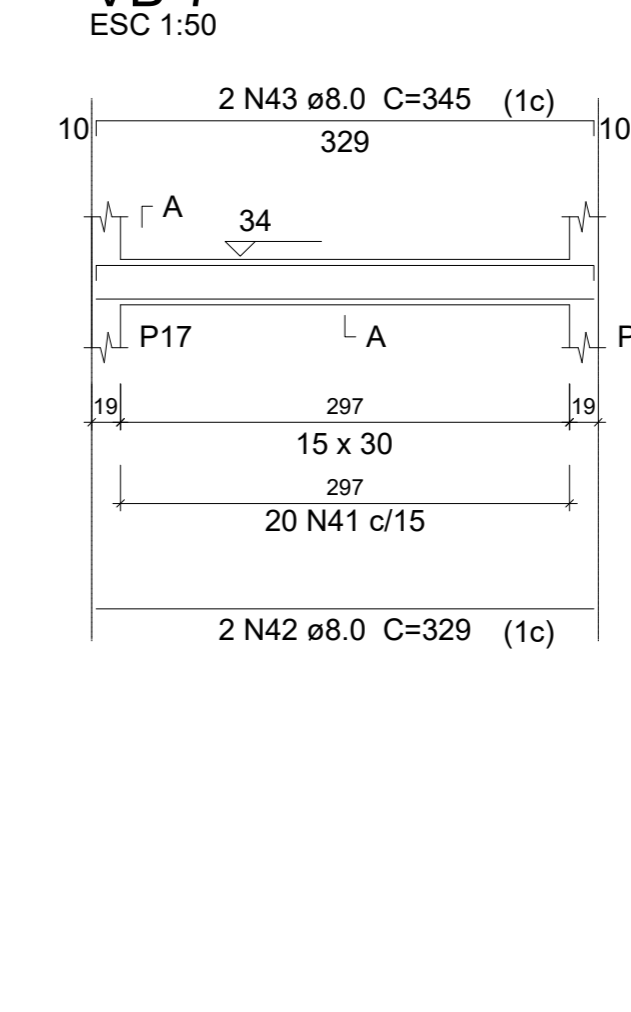
VB-4



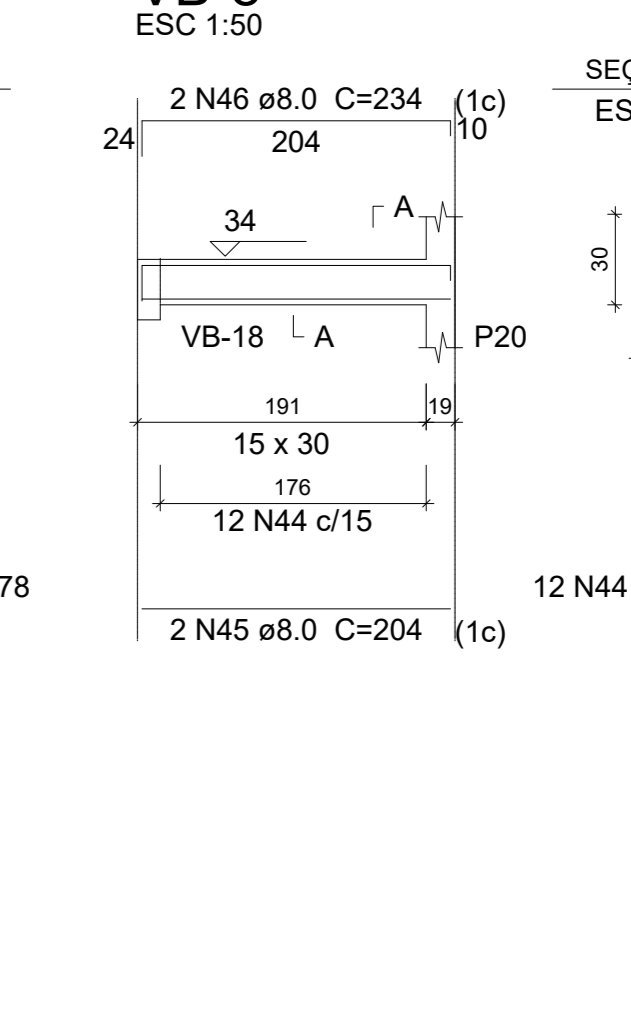
VB-6



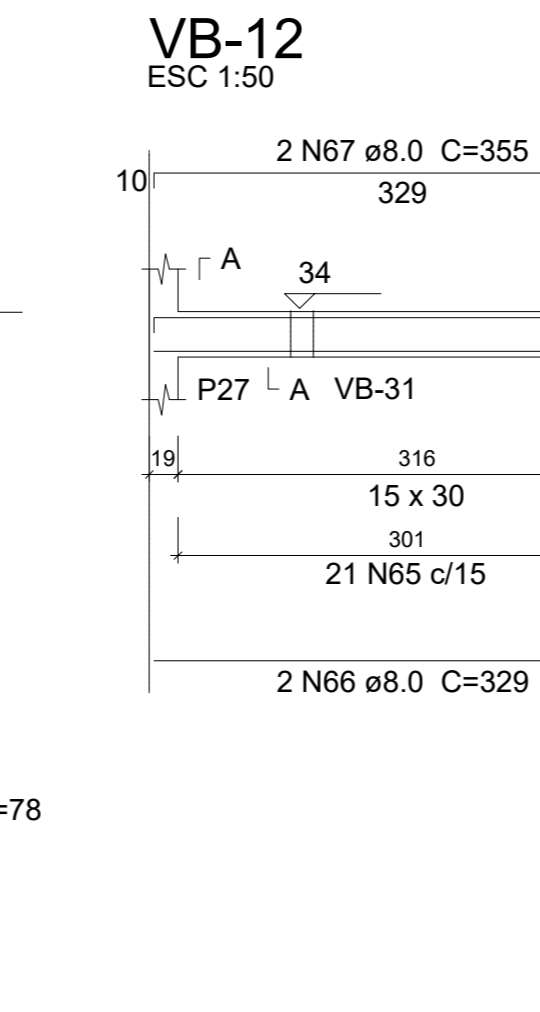
VB-7



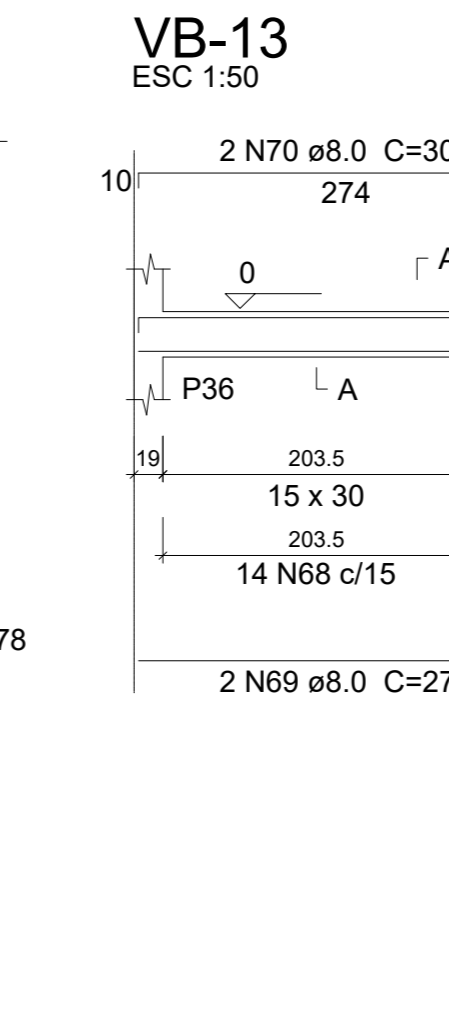
VB-8



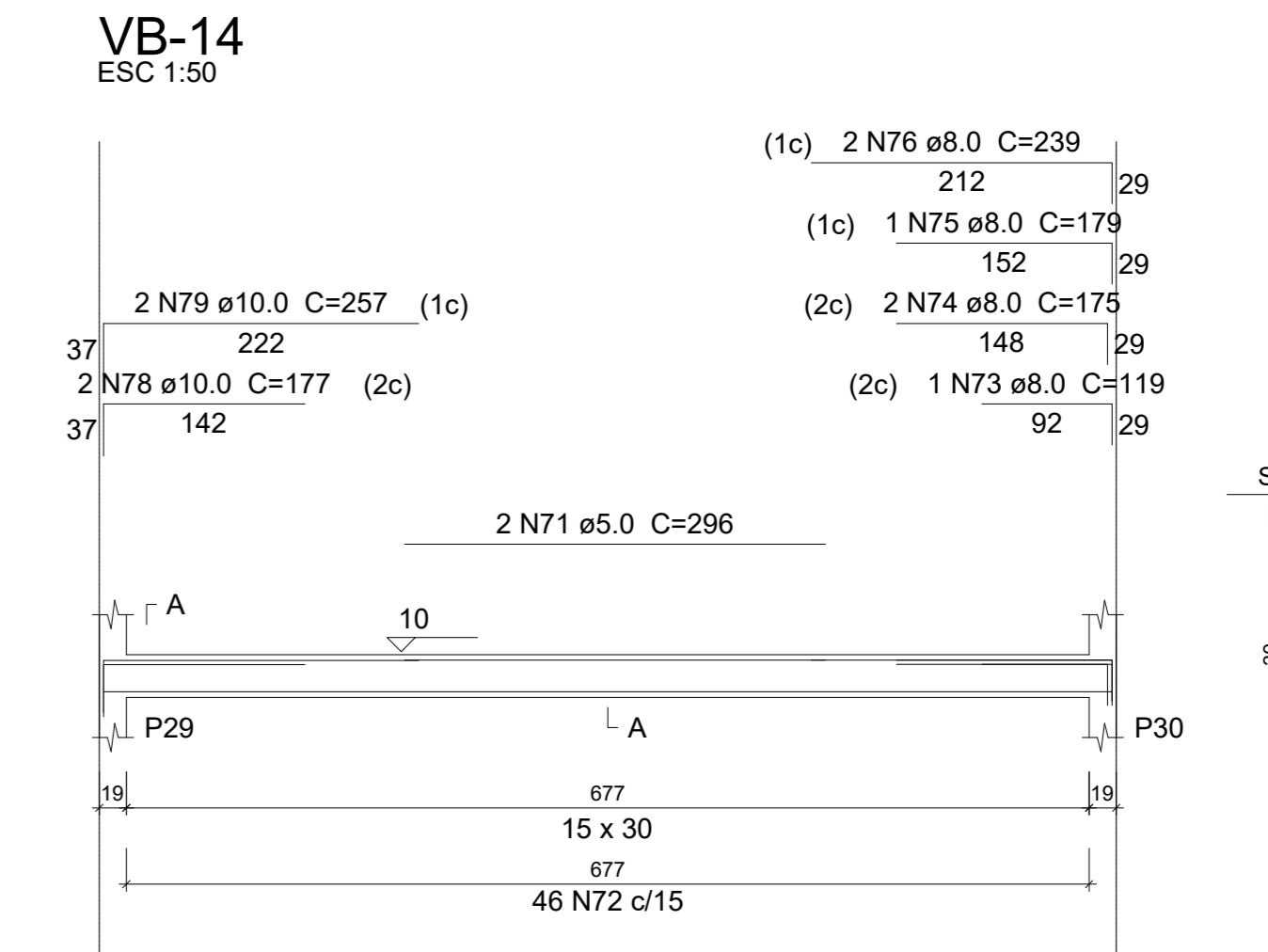
VB-12



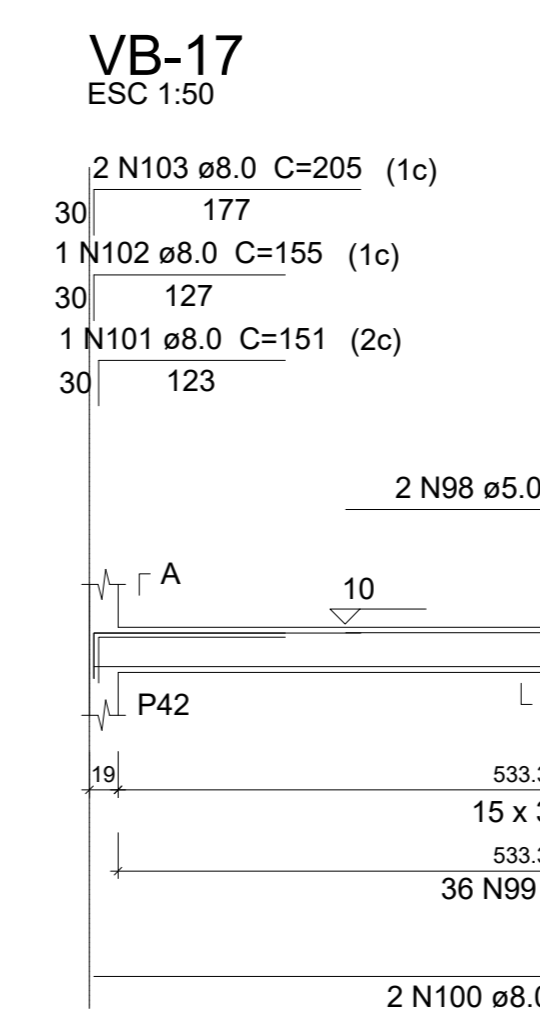
VB-13



VB-14



VB-17



PROJETO ESTRUTURAL

PROJETO NÚMERO:	
OBRA:	
RT. PROJETO:	PROPRIETÁRIO:
DOMINGOS J. DA COSTA ENG. CIVIL CREA/TO nº 21688/0	
PREFEITURA MUNICIPAL DE ALIANÇA DO TOCANTINS-TO PREFEITO: ELVES MOREIRA GUIMARÃES	
RT. EXECUÇÃO:	DECLARO QUE A APROVAÇÃO DESSE PROJETO NÃO IMPLICA NO RECONHECIMENTO POR PARTE DA PREFEITURA DO DIREITO DE PROPRIEDADE DO TERRENO
DESENHO: ENG. MURYLO RODRIGUES CÂNDIDO DE OLIVEIRA CONTEÚDO: DETALHE DAS VIGAS BALDRAME	
LOCALIZAÇÃO: RUA CENTO E SEIS S/N, QD. 09, LT. 01, JARDIM ALIANÇA CIDADE: ALIANÇA DO TOCANTINS-TO	ESTADO: TO DATA: JAN/2023
ESCALA: INDICADA	REVISÃO: ÁREAS: Ver Arq. PRANCHA: 03/06