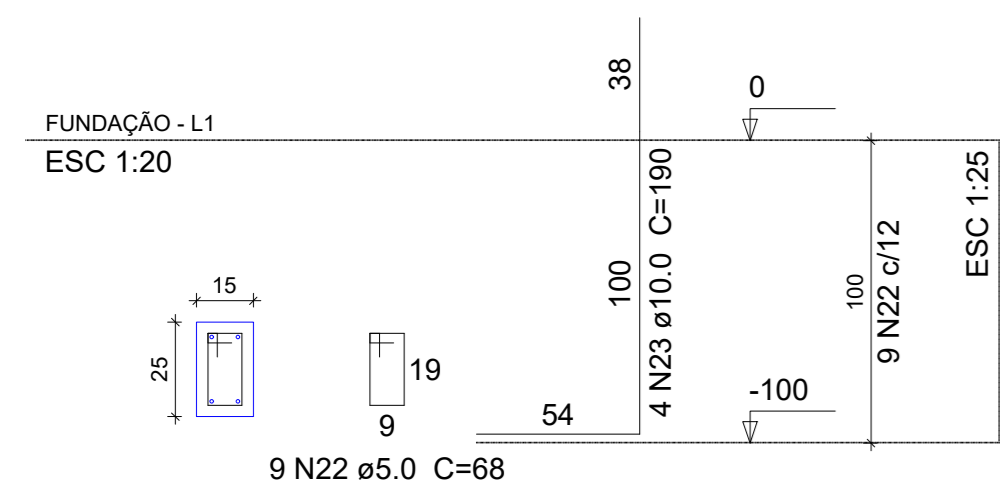
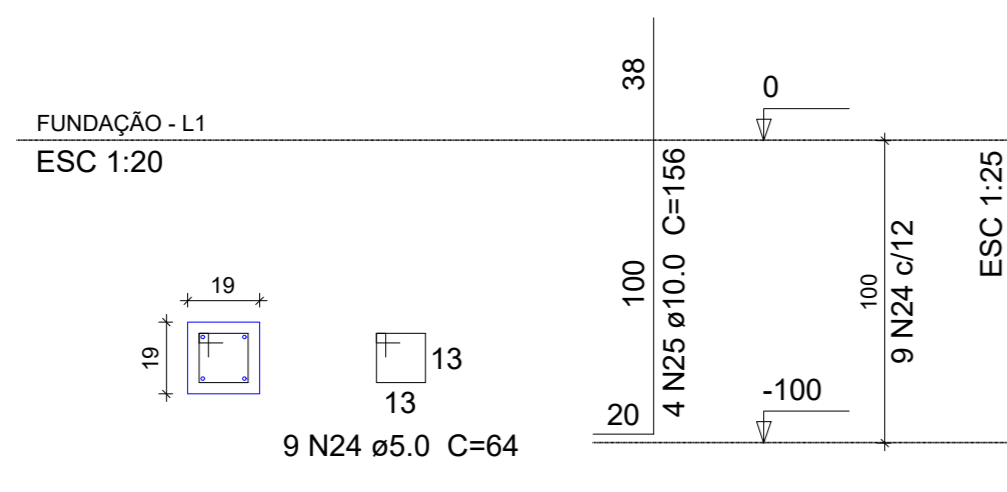


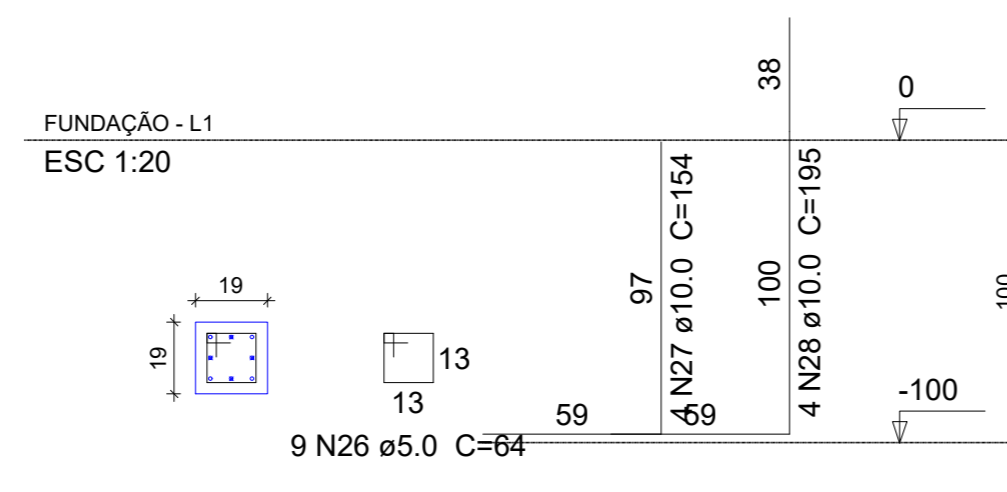
P1=P2=P3=P4=P5



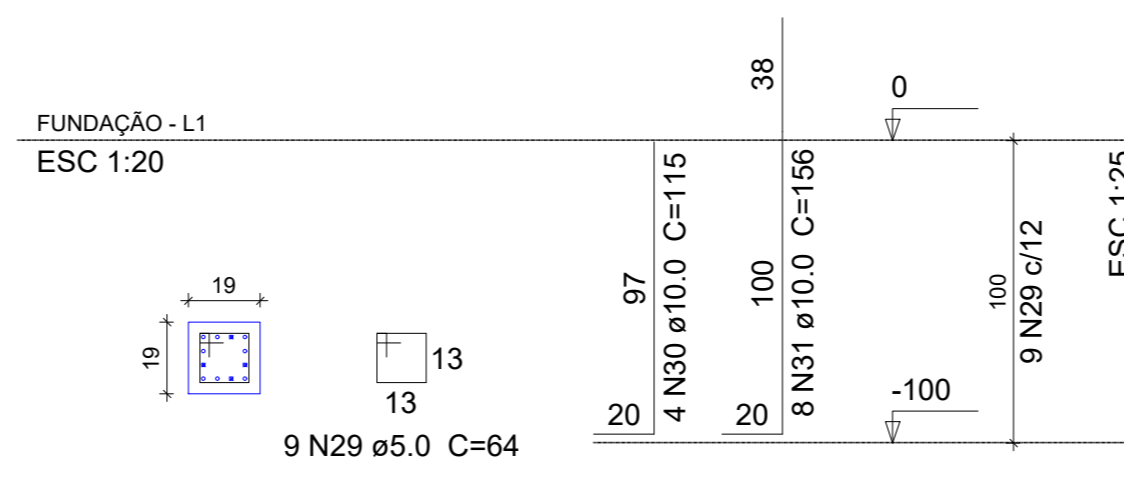
P6=P7=P8=P9=P10=P11=P12=P15=P20



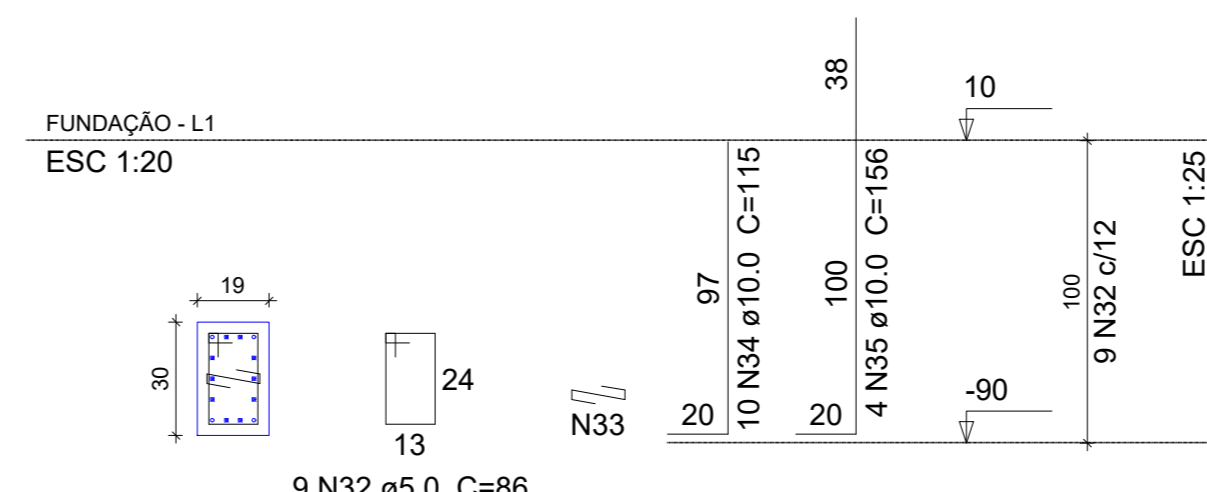
P13=P16=P19



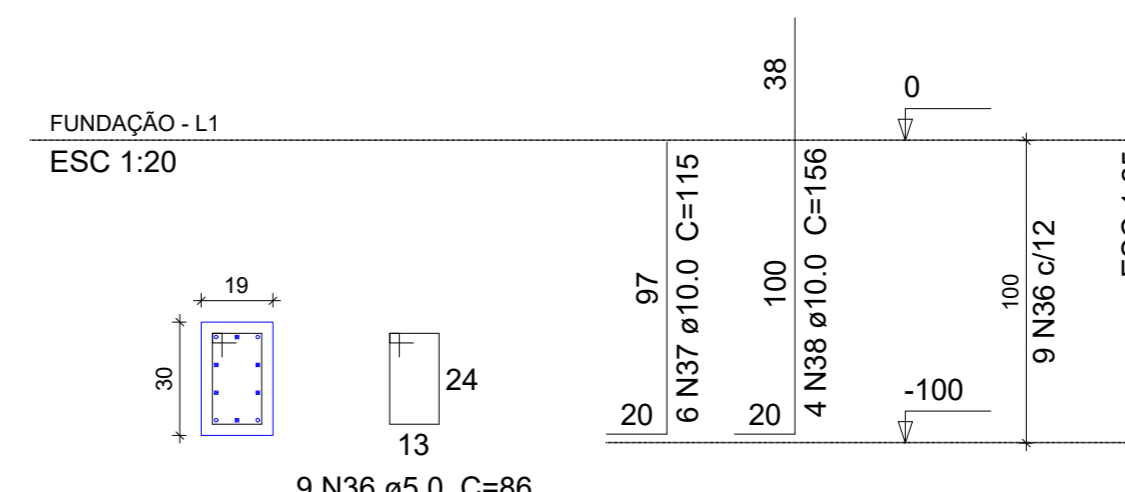
P14



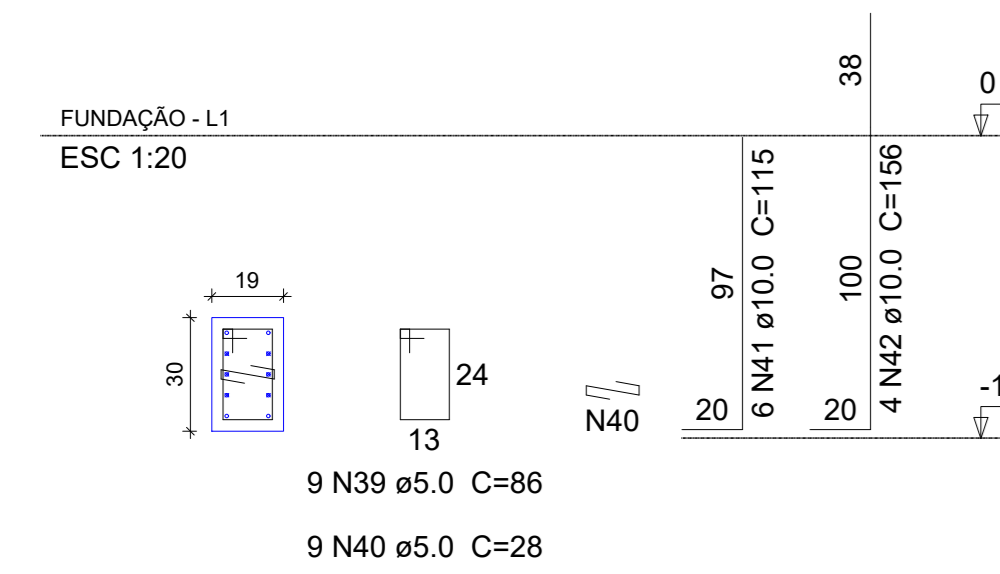
P17



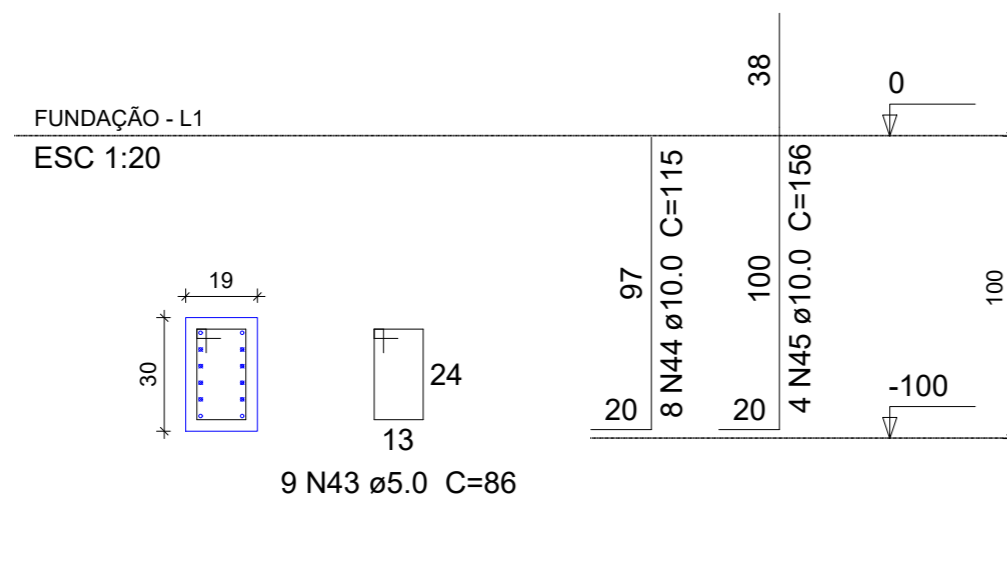
P18



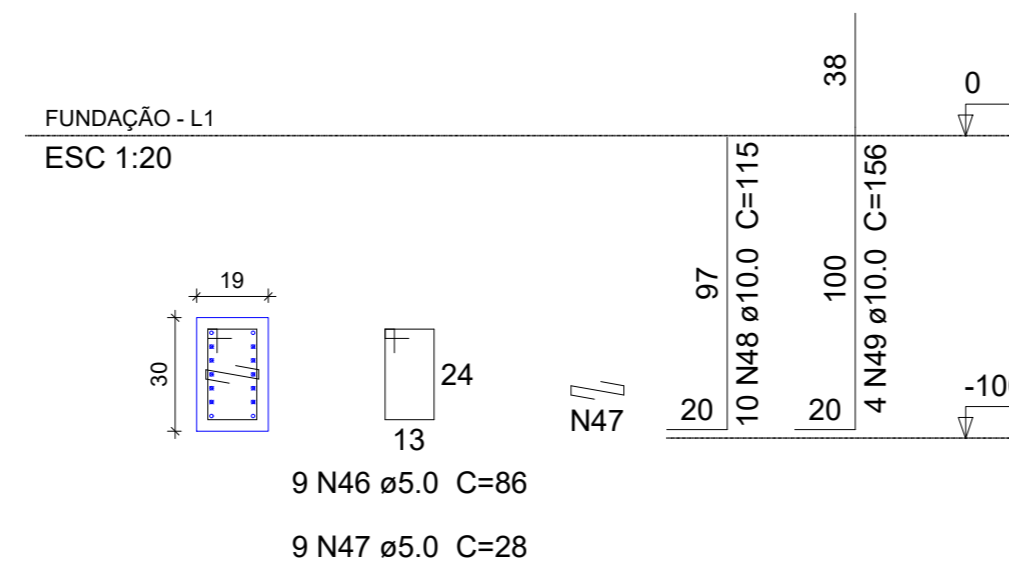
P21



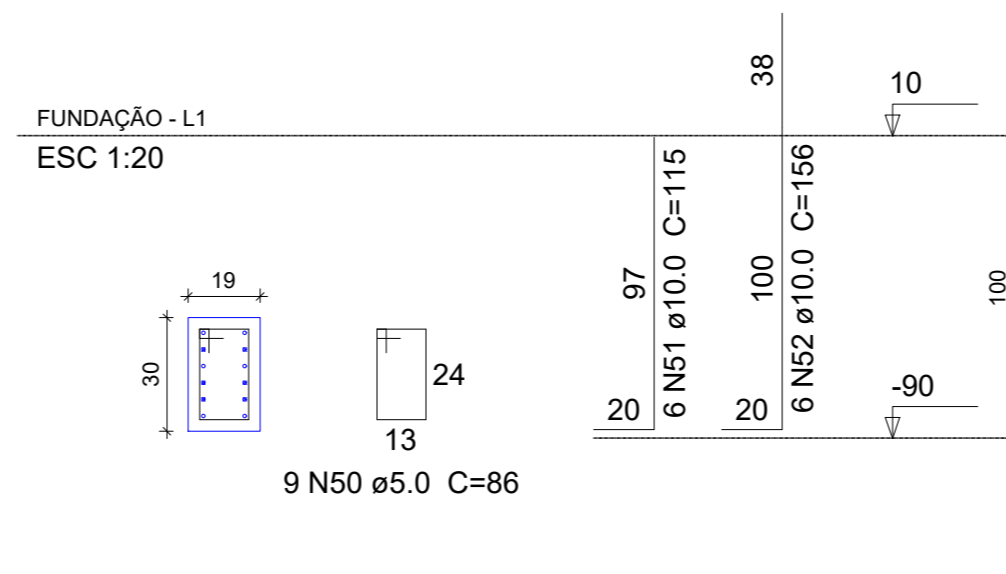
P22=P23



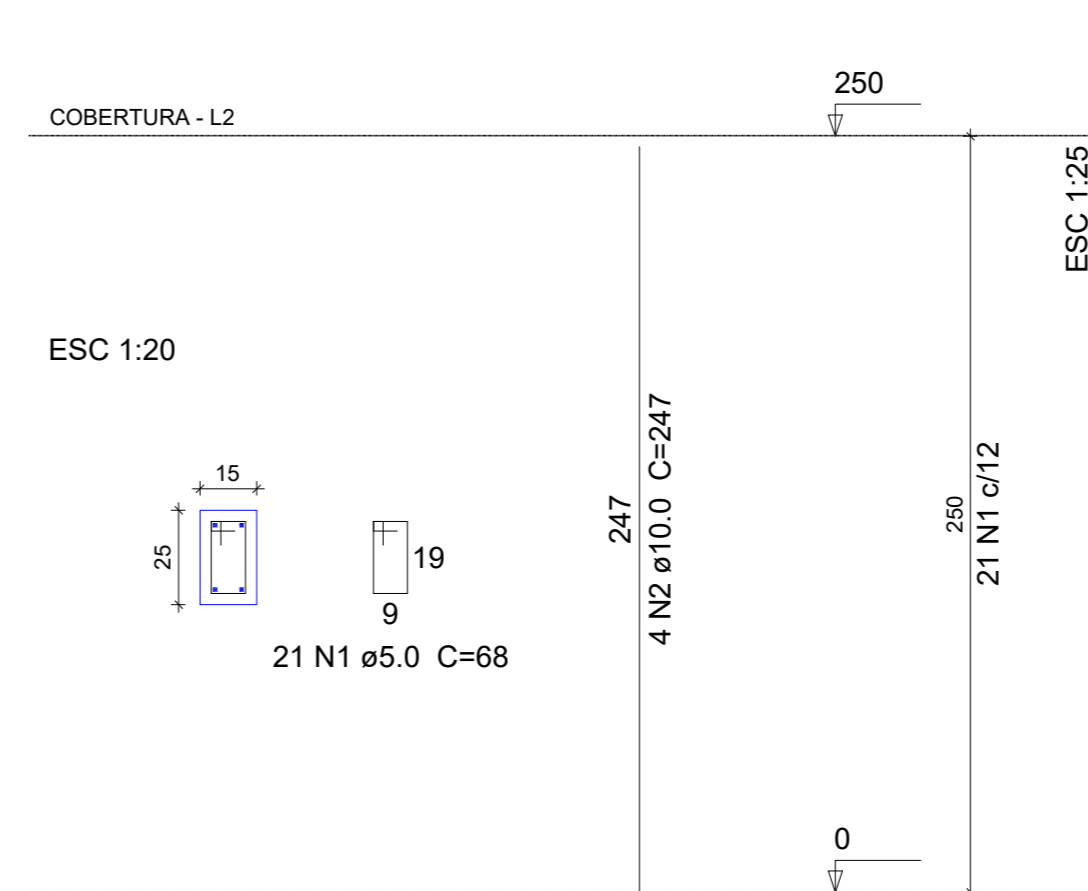
P24



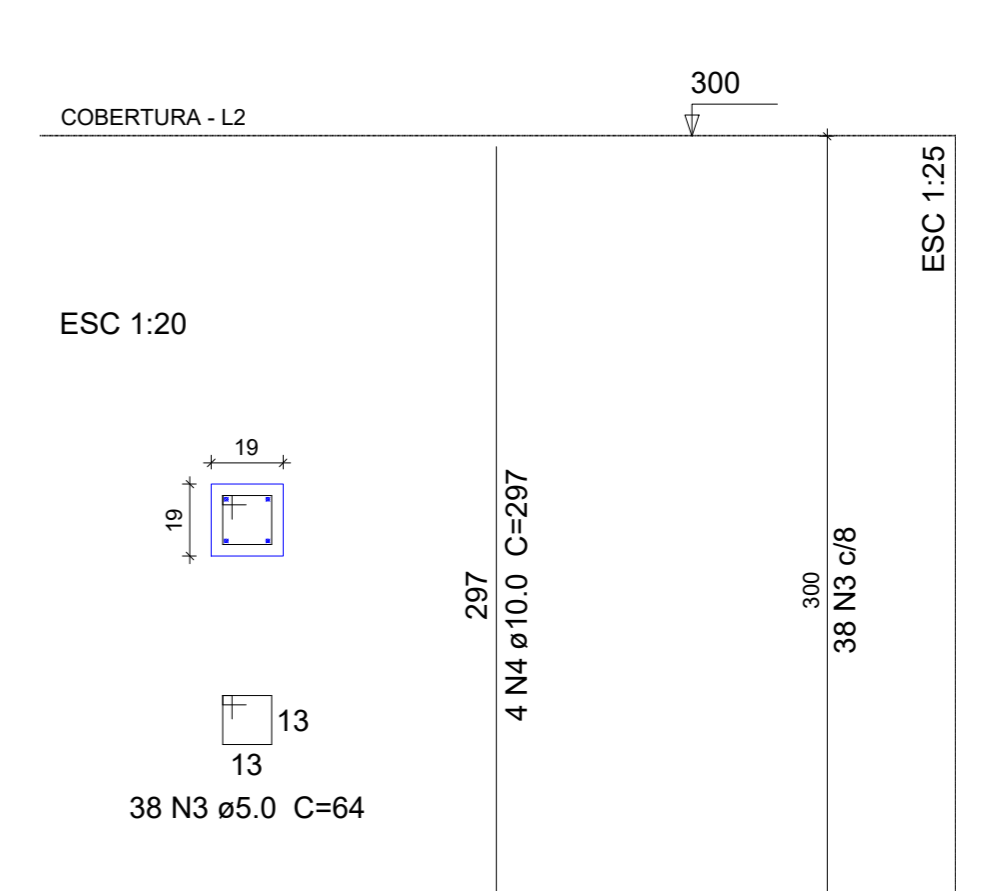
P25



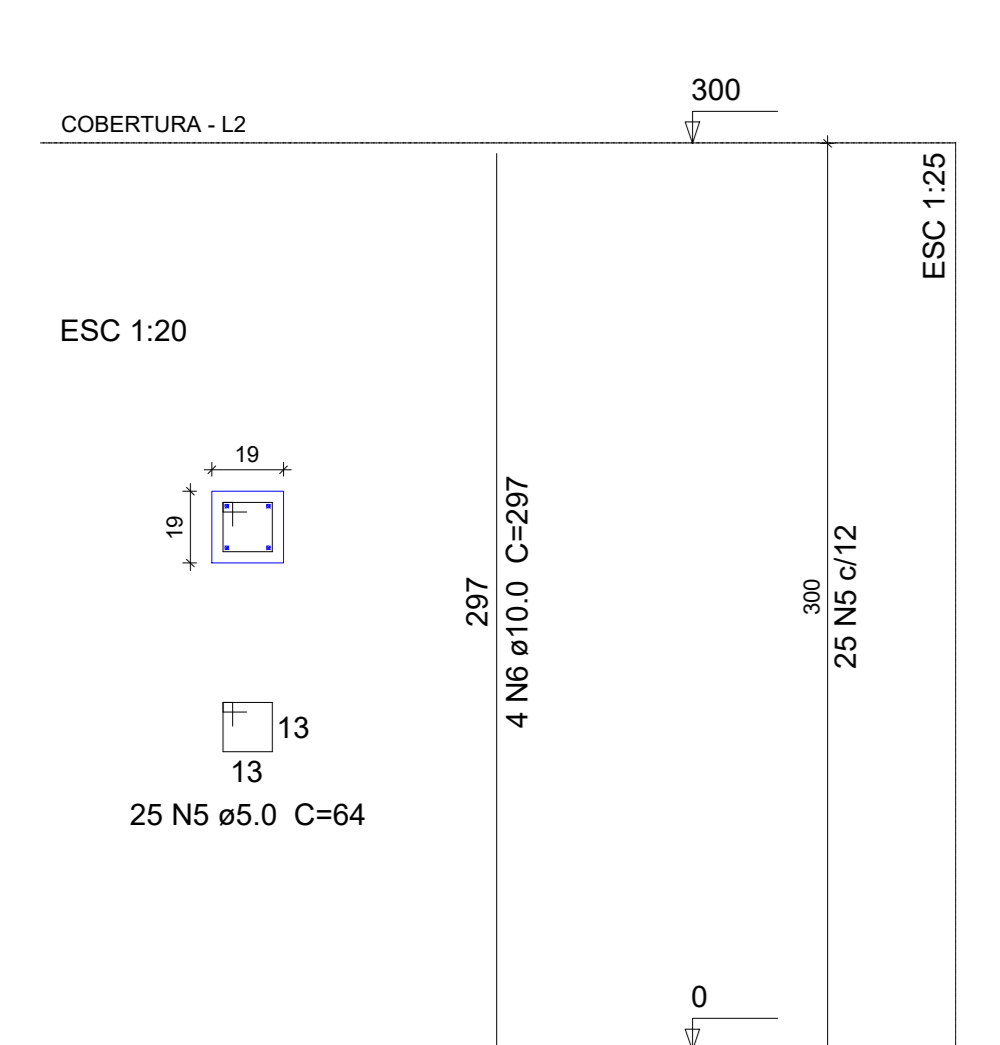
P1=P2=P3=P4=P5



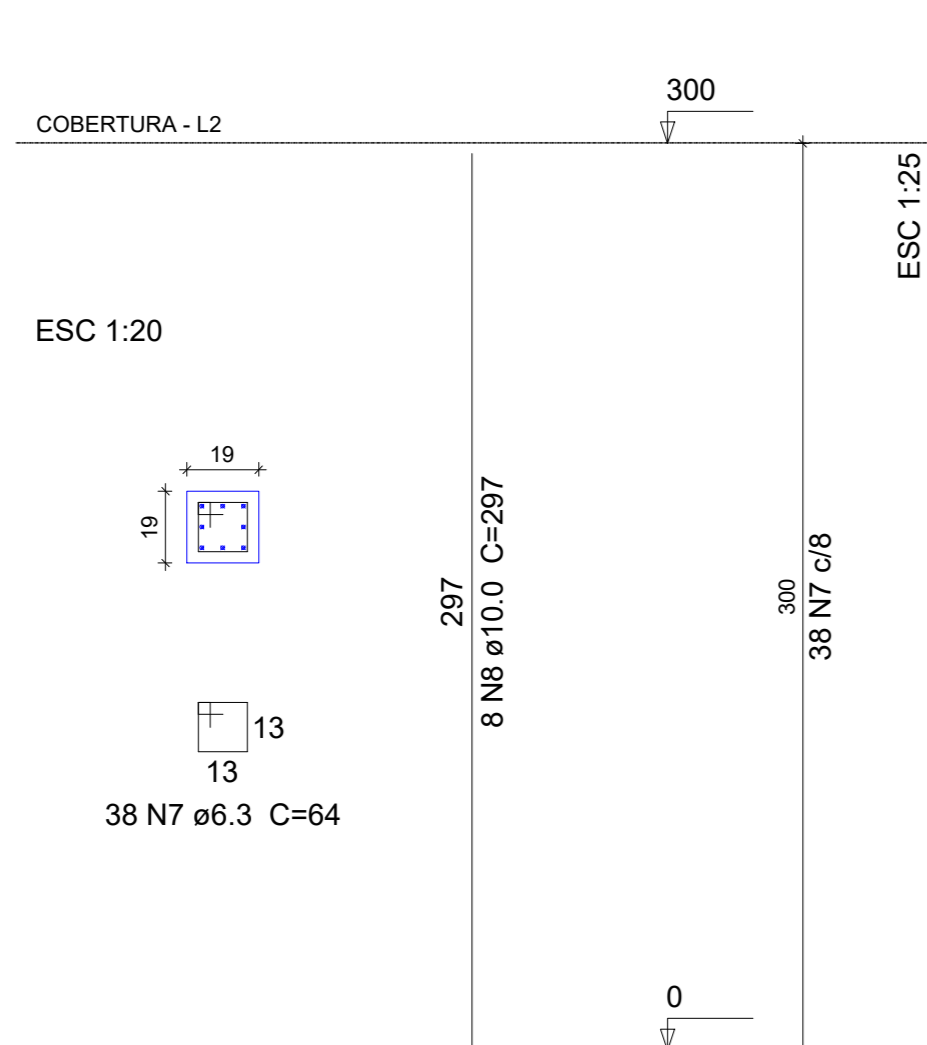
P6=P15



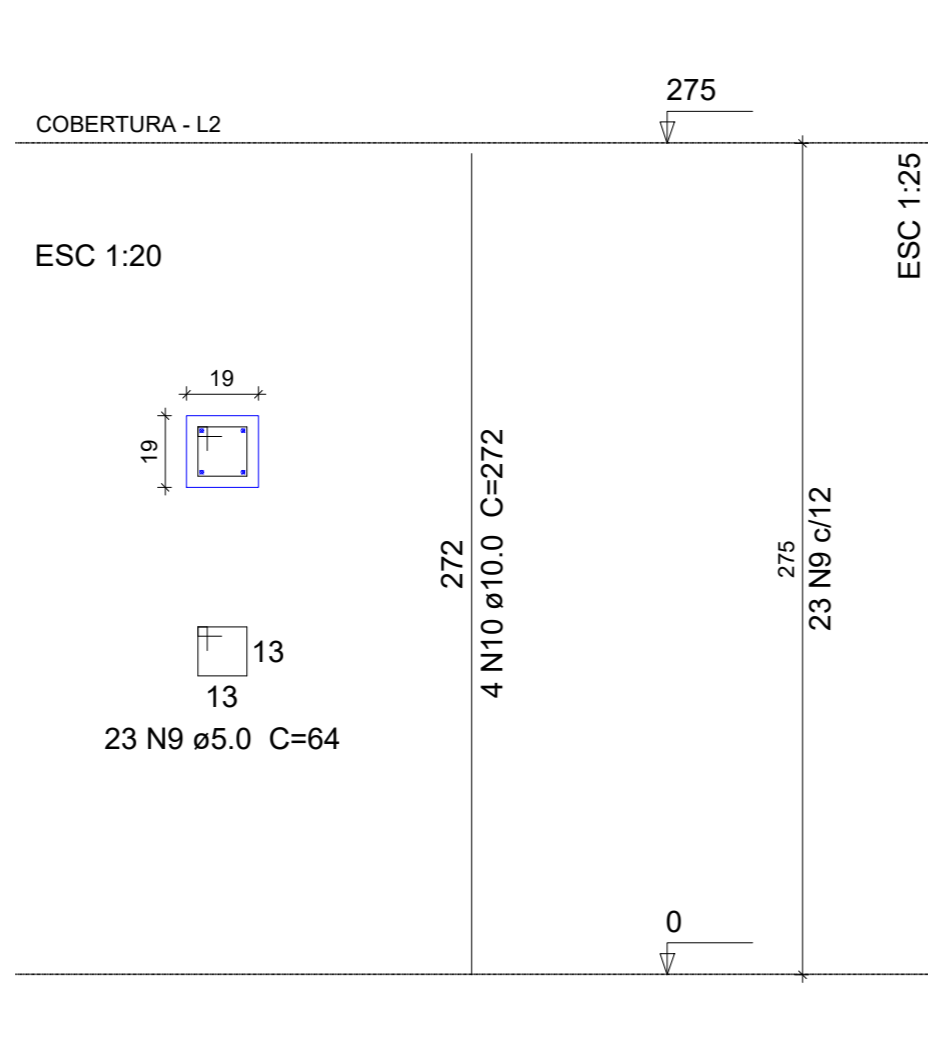
P7=P8=P9=P10=P11=P12=P13



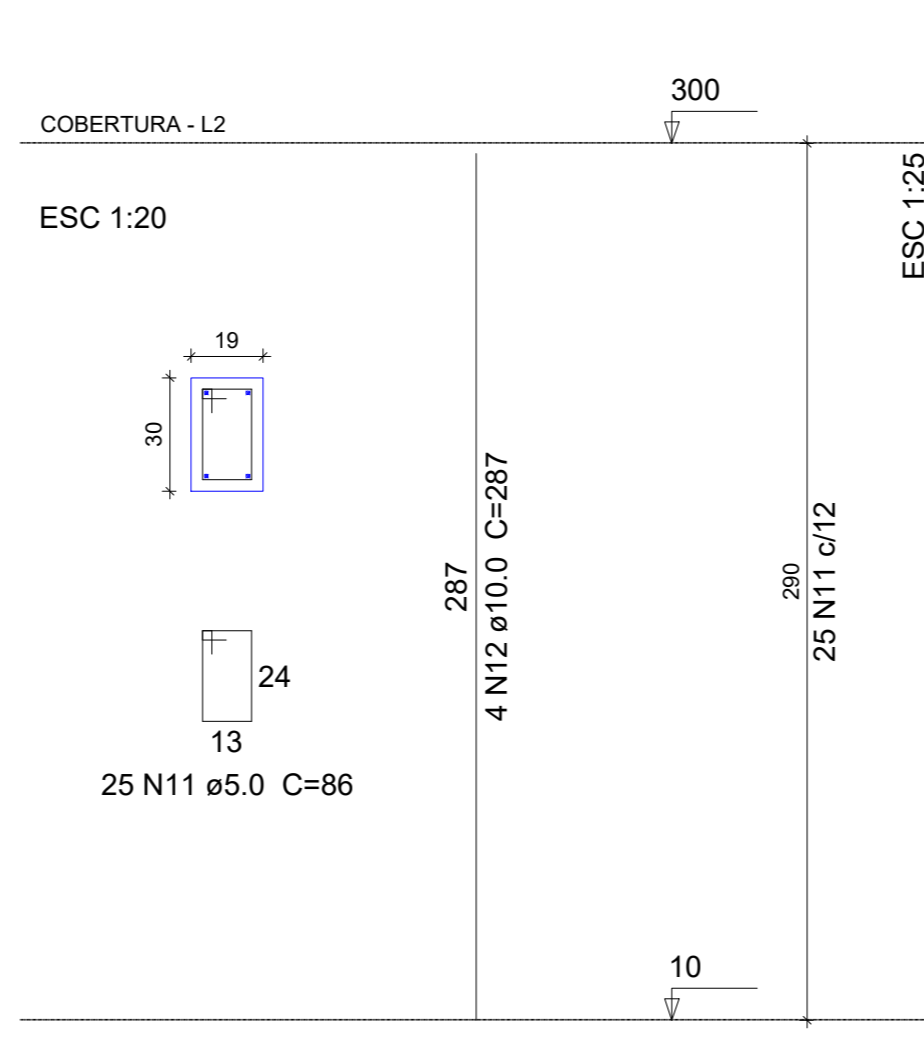
P14



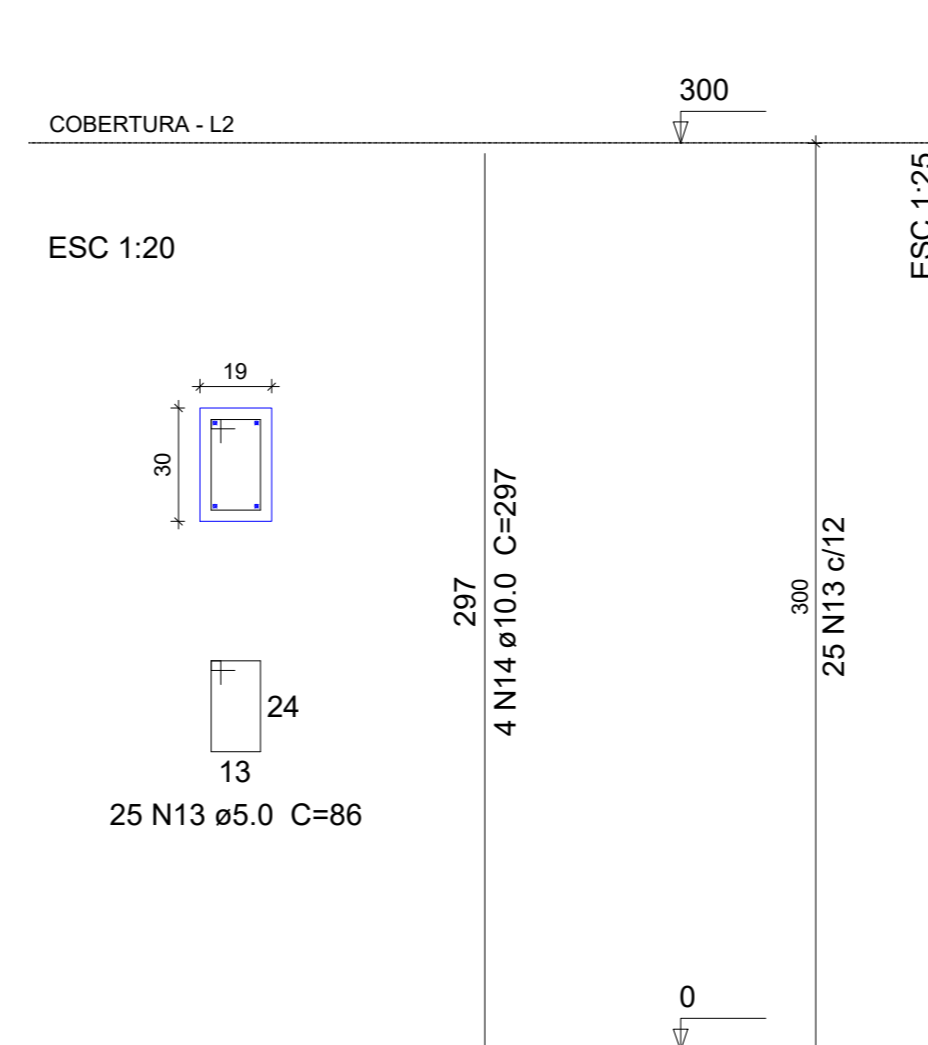
P16=P19



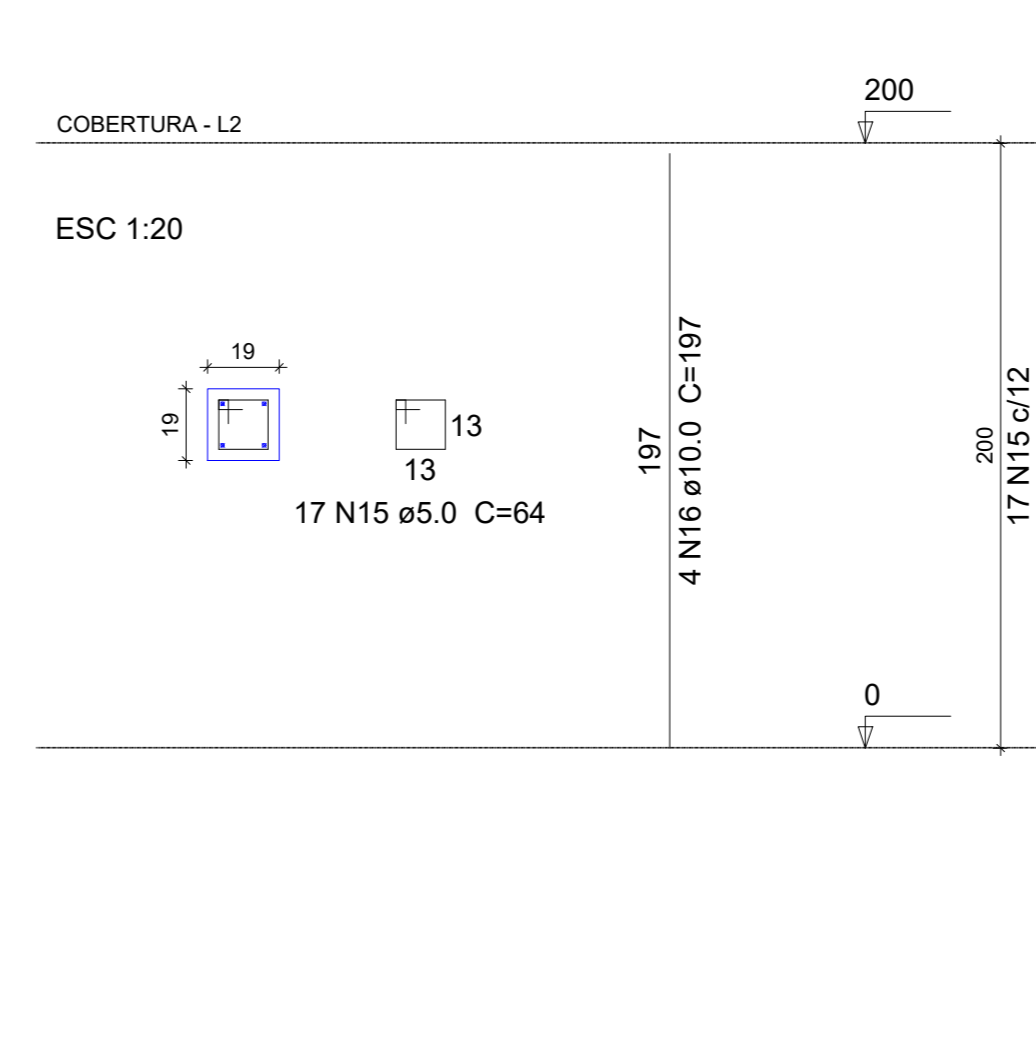
P17



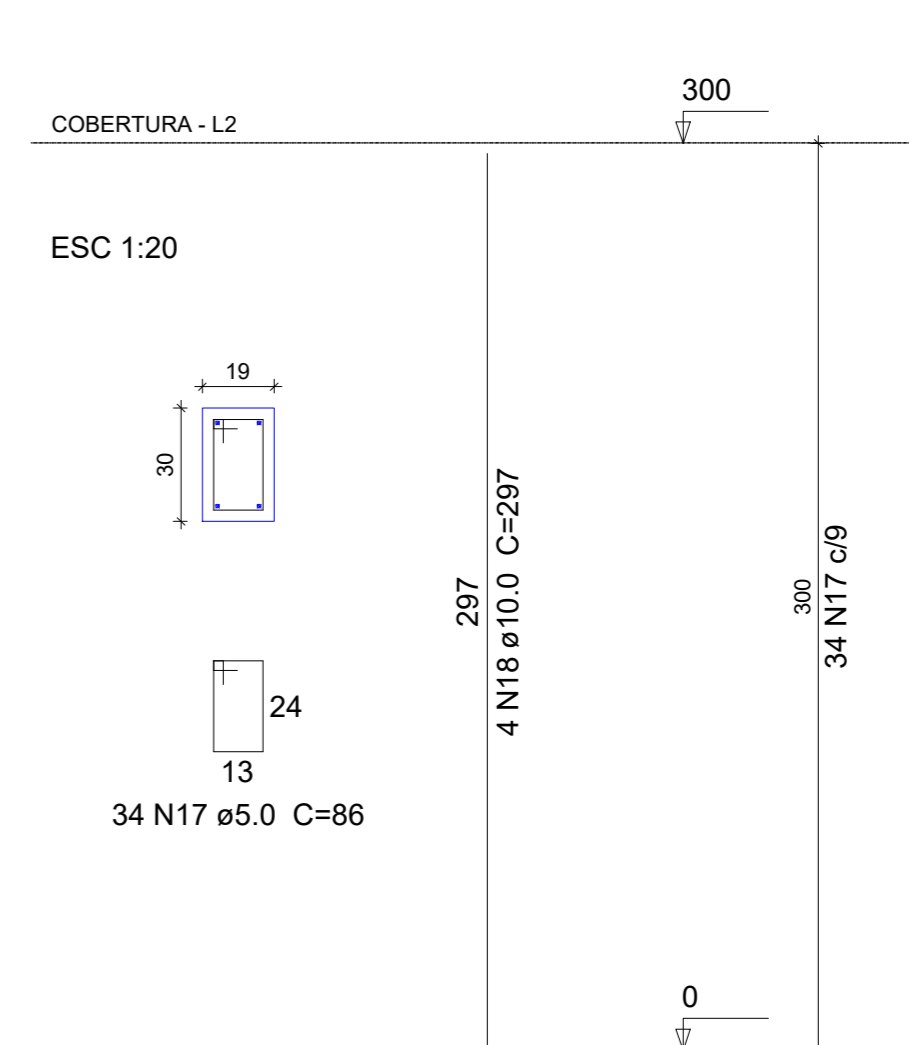
P18=P22=P23=P24



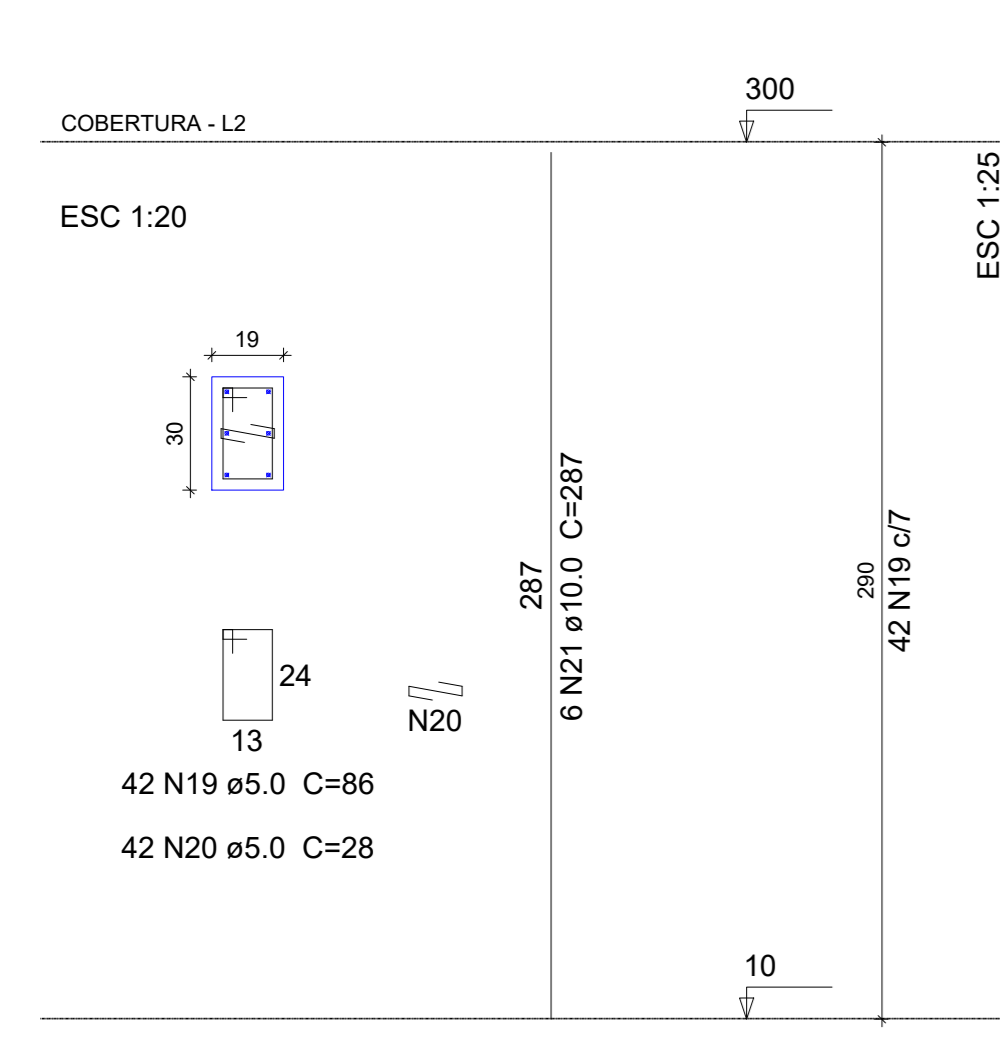
P20



P21



P25



Relação do aço

ELEMENTO	AÇO	N	DIAM	Q	UNIT (cm)	C.TOTAL (cm)
<b>Cobertura</b>						
5xP1	CA80	1	5.0	105	68	7140
	CA50	2	10.0	20	247	4940
2xP6	CA60	3	5.0	76	64	4864
	CA50	4	10.0	8	297	2376
7xP7	CA60	5	5.0	175	64	11200
	CA50	6	10.0	28	297	8316
P14	CA50	7	6.3	38	64	2432
	CA50	8	10.0	8	297	2376
2xP16	CA60	9	5.0	46	64	2944
	CA50	10	10.0	8	272	2176
P17	CA60	11	5.0	25	86	2150
	CA50	12	10.0	4	287	1148
4xP18	CA60	13	5.0	100	86	8600
	CA50	14	10.0	16	297	4752
P20	CA60	15	5.0	17	64	1088
	CA50	16	10.0	4	197	788
P21	CA60	17	5.0	34	86	2924
	CA50	18	10.0	4	297	1188
P25	CA60	19	5.0	42	86	3612
	CA60	20	5.0	42	28	1176
	CA50	21	10.0	6	287	1722
<b>Fundação</b>						
5xP1	CA60	22	5.0	45	68	3060
	CA50	23	10.0	20	190	3800
9xP6	CA60	24	5.0	81	64	5184
	CA50	25	10.0	36	156	5616
3xP13	CA60	26	5.0	27	64	1728
	CA50	27	10.0	12	154	1848
P14	CA50	28	10.0	12	195	2340
	CA60	29	5.0	9	64	576
	CA50	30	10.0	4	115	460
P17	CA60	31	10.0	8	156	1248
	CA60	32	5.0	9	86	774
	CA60	33	5.0	9	28	252
	CA50	34	10.0	10	115	1150
	CA50	35	10.0	4	156	624
P18	CA60	36	5.0	9	86	774
	CA50	37	10.0	6	115	690
	CA50	38	10.0	4	156	624
P21	CA60	39	5.0	9	86	774
	CA60	40	5.0	9	28	252
	CA50	41	10.0	6	115	690
	CA50	42	10.0	4	156	624
2xP22	CA60	43	5.0	18	86	1548
	CA50	44	10.0	16	115	1840
	CA50	45	10.0	8	156	1248
P24	CA60	46	5.0	9	86	774
	CA60	47	5.0	9	28	252
	CA50	48	10.0	10	115	1150
	CA50	49	10.0	4	156	624
P25	CA60	50	5.0	9	86	774
	CA50	51	10.0	6	115	690
	CA50	52	10.0	6	156	936

Resumo do aço

AÇO	DIAM	C.TOTAL (m)	PESO (kg)
CA50	6.3	24.4	6
	10.0	559.9	345.4
CA60	5.0	624.2	96.1
<b>PESO TOTAL</b>			
CA50		351.4	
CA60		96.1	

Vol. de concreto total (C-25) = 4.06 m³  
Área de forma total = 79.62 m²



PROJETO ESTRUTURAL

PROJETO NÚMERO:

OBRA:

RT. PROJETO: DOMÍNGOS J. DA COSTA  
ENG. CIVIL CREA-TO nº 211808/D

PROPRIETÁRIO: PREFEITURA MUNICIPAL DE ALIANÇA DO TOCANTINS-TO  
PREFEITO: ELVES MOREIRA GUIMARÃES

RT. EXECUÇÃO:

DECLARO QUE A APROVAÇÃO DESSE PROJETO NÃO IMPLICA NO RECONHECIMENTO POR PARTE DA PREFEITURA DO DIREITO DE PROPRIEDADE DO TERRENO.

DESENHO: ENG. MURYLO RODRIGUES CÂNDIDO DE OLIVEIRA  
CONTEÚDO: DETALHE DOS PILARES

LOCALIZAÇÃO: RUA CENTO E SEIS S/N, QD. 09, LT. 01, JARDIM ALIANÇA  
CIDADE: ALIANÇA DO TOCANTINS-TO ESTADO: TO DATA: JUN/2023

ESCALA: INDICADA REVISÃO: ÁREAS: Ver Arq. PRANCHA: 05/05